



# General Catalog

Unlocking the full potential  
of your machines

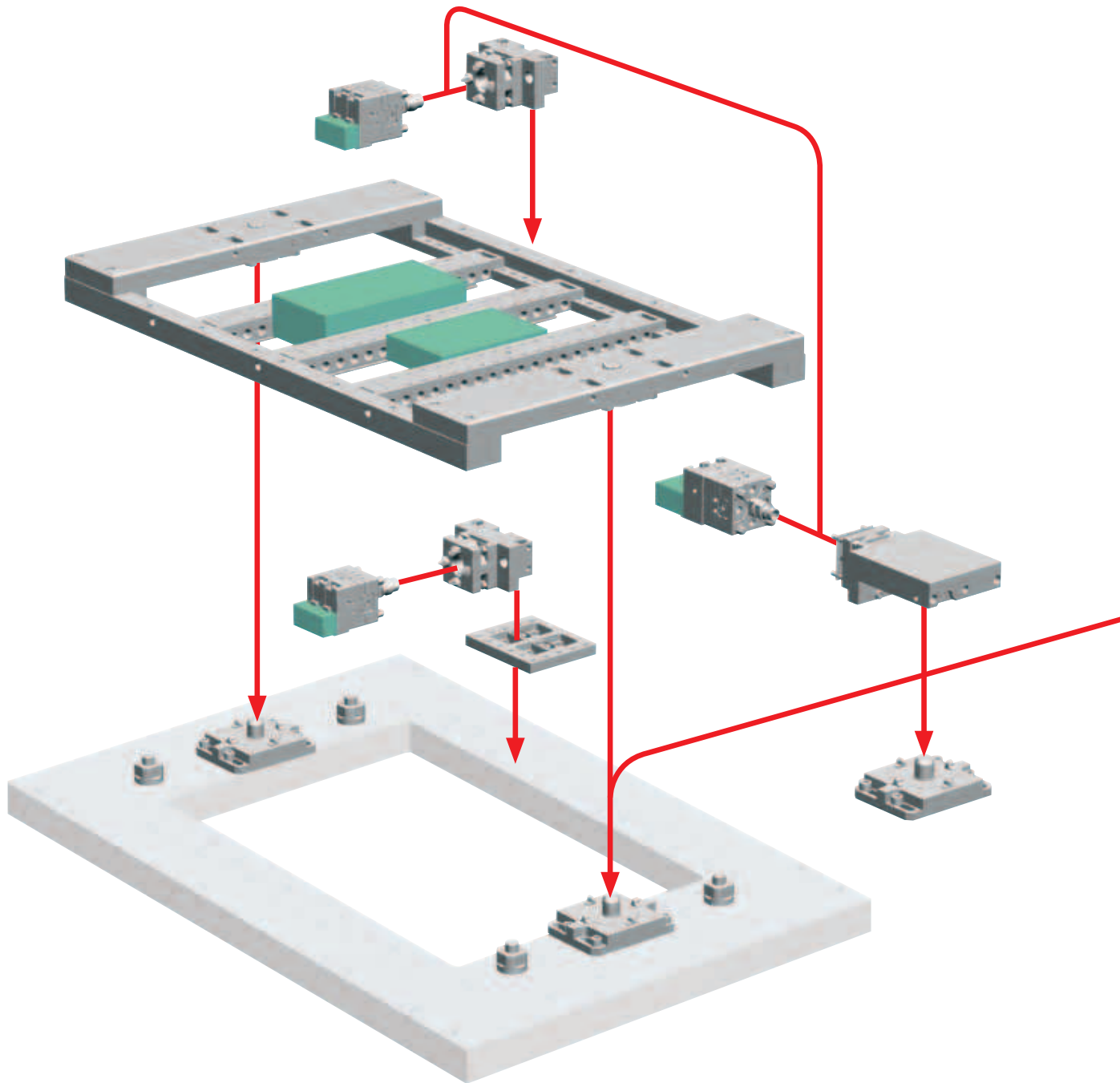


EROWA Wire EDM Tooling

# The modular tooling system for WEDM purposes

EROWA tooling systems make WEDM centers considerably more flexible and productive. Down-times can be virtually eliminated. Expensive machines can work round the clock.

Our program contains system components for newcomers, for those who would like to extend the use of ITS, and for top-end users. You define the framework and you are bound to win.



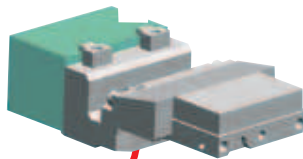
**Applications**



**Handling**

Manual / Loading facility / Robot

- Modular tooling system.
- Single and multiple palletization.
- Repeatability of clamping elements 0.002 mm.
- WEDM basic kits for all popular WEDM centers.
- Can be automated with EROWA handling facilities.



**Technical data - Wire EDM Tooling**

	Flat clamping chuck		Chuck RSA 50	QuickChuck 50 RSM
	pneumatisch	manuell		
Repeatability	0.002 mm	0.002 mm	0.002 mm	0.002 mm
Indexing			4 x 90°	4 x 90°
Clamping power	with reclamping 7'000 N	without reclamping 3'000 N	2'800 N	4'000 N
Clamping process	Spring tension	mechanically	Spring tension	Spring tension
Opening, compressed air, dry	min. 6 bar			min. 6 bar
Operation	pneumatically	mechanically	pneumatically	mechanically
Max. weight of pallet	30 kg (with support)	30 kg (with support)		

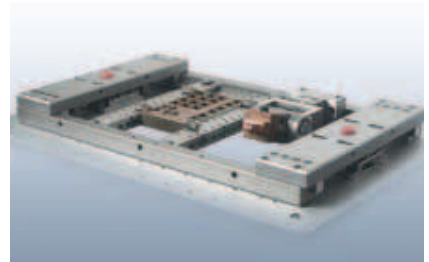
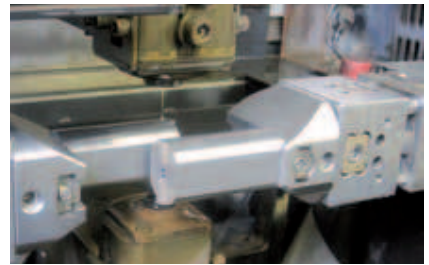
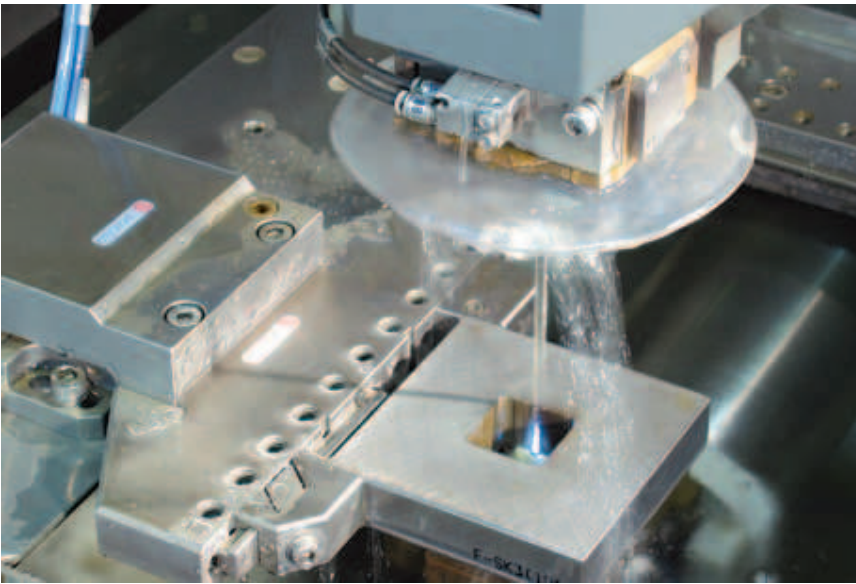
## EROWA Wire EDM Tooling

# Quick and precise resetting

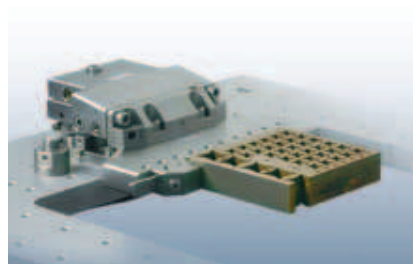
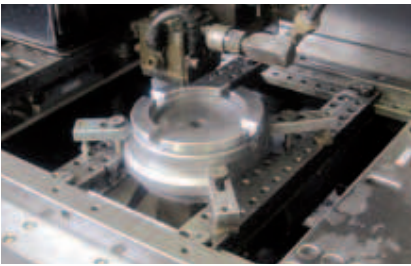
The right solution for every application. With well-thought-out combinations of vises, clamping elements and clamping beams, any conceivable workpiece can be clamped. The repeatability of EROWA's Wire EDM tooling system allows for workpieces to be preset outside the machine and for safe automatic loading. Ongoing jobs can be interrupted for express jobs and then continued later.

### FLEXIBLE

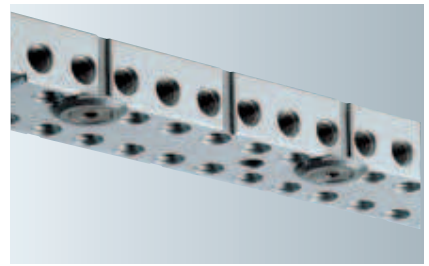
Suitable workpiece carriers for all workpiece sizes.



Use removable supports where they make sense. Thread in EDM wire through the special grooves.



Adjustable in all axes: the pendulum holder with fitted flat vise.



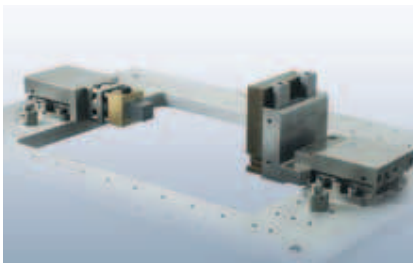
Use removable supports where they make sense. Thread in EDM wire through the special grooves.



EROWA Lift to load the WEDM center.



Special accommodation for cylindrical parts. Fitted to the pendulum holder, workpieces can be adjusted in three axes.



Single palletization in a manned shift: this is where the tricky jobs are done.



EDM electrode holders are positioned on the WEDM center for machining both quickly and with high precision.



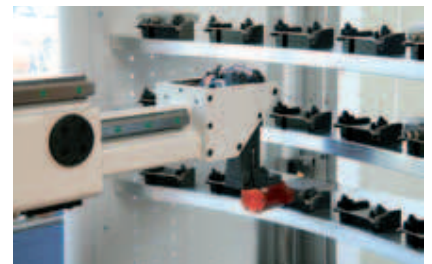
Its low design creates more space for workpieces.



Presetting the workpieces saves time.



Presetting made easy. While the WEDM center is in operation, the next job is being preset quickly and accurately on the EROWA PreSet station.



Load Robots for more autonomy at night and at weekends. We'll be glad to advise you how to increase your productivity with an EROWA handling facility.

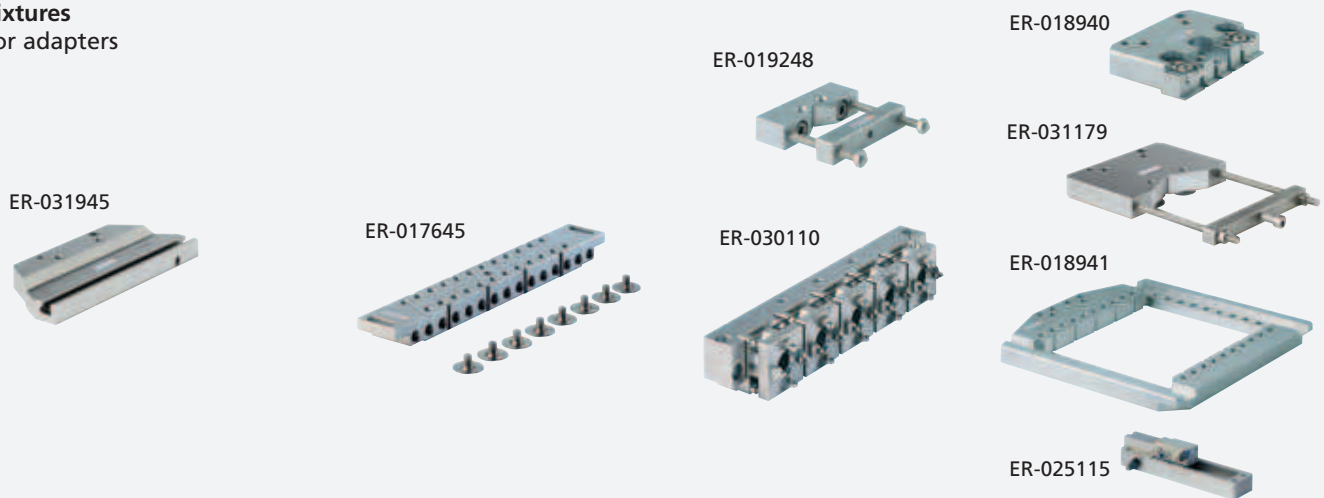
# EROWA Wire EDM Tooling Tooling System

## The components

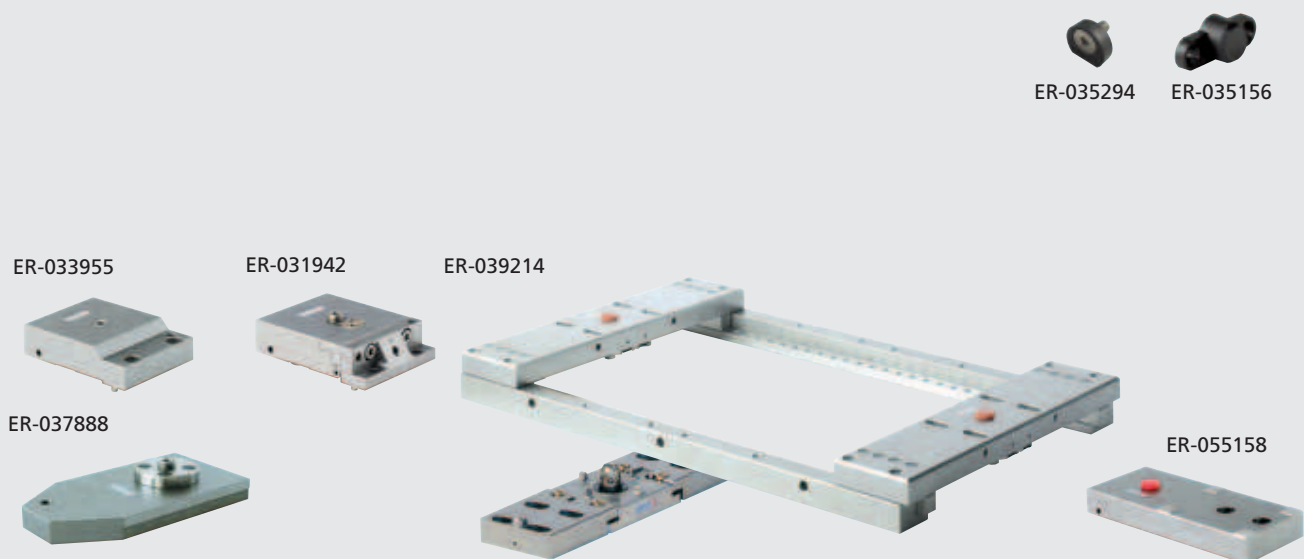
### Clamping elements for fixtures



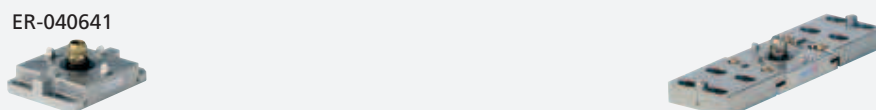
### Fixtures for adapters



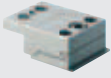
### Adapters for interfaces



### Interfaces to machine table



ER-008221



ER-029229



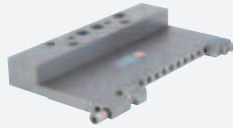
ER-029228



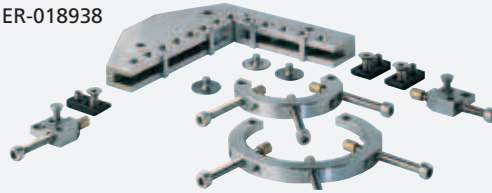
ER-025895



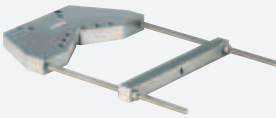
ER-054922



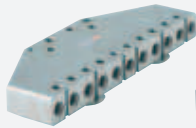
ER-018938



ER-038891



ER-018937



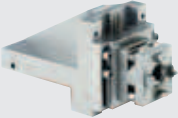
ER-055774



ER-051800



ER-038710



ER-033974



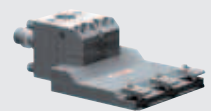
ER-008814



ER-008842



ER-052091



ER-007935



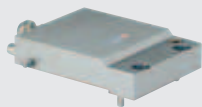
ER-008856



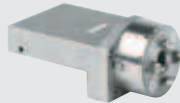
ER-016691



ER-030678



ER-039795



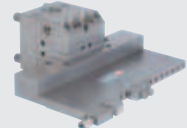
ER-014722



ER-014698



ER-055535



ER-030923



ER-033933



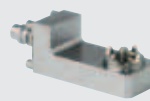
ER-012727



ER-007877



ER-038711



ER-028471



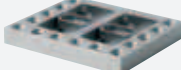
ER-035714



ER-035715



ER-017198



ER-007852



ER-022583


























To make it easier for you to find your way about the fields of application for EROWA products, we use the following symbols in all our documents:



**EROWA WIRE EDM TOOLING**

-  1. Manual operation
-  2. Operate with compressed air jet
-  3. Operate with manual valve
-  4. Operate with manual control unit
-  5. Operate with electro-pneumatic control unit
-  6. With central flushing clearance
-  7. Suited for submerged operation
-  8. Corrosion-resistant material
-  9. Suited for automatic operation
-  10. Handling with EROWA Robot gripper S
-  11. Handling with EROWA Combi gripper
-  12. Handling with EROWA Robot gripper 72
-  13. Handling with EROWA Robot gripper 115
-  14. Handling with EROWA Robot gripper 148
-  15. Handling with EROWA gripper RN PC 210
-  16. Handling with EROWA RCS gripper

Wire EDM Tooling	Interfaces to machine table	230
Wire EDM Tooling	Adapters for interfaces	235
Wire EDM Tooling	Fixtures for adapters	241
Wire EDM Tooling	Clamping elements for fixtures	250
Wire EDM Tooling	System accessories	253
Wire EDM Tooling	Wire EDM Tooling Kits	258
Wire EDM Tooling	Clamping equipment sets	260

-  For chip-removing processes
-  For EDM sinking
-  For WEDM

# EROWA Wire EDM Tooling

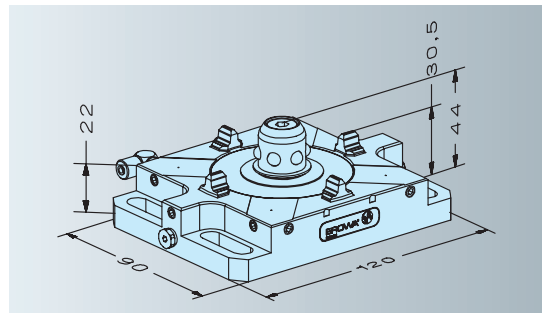
## Interfaces to machine table

Technical data	Flat chuck pneumatic	manual
Repeatability	0.002 mm	0.002 mm
Clamping power	with reclamping 7,000 N	without reclamping 3,000 N
Generated by	spring power	mechanic
Opening with compressed air, dry	min. 6 bar	
Operation	pneumatic	manual
Max. pallet weight	30 kg (with support)	30 kg (with support)

### ER-035714 Flat chuck pneumatic PalletSet W / FrameSet



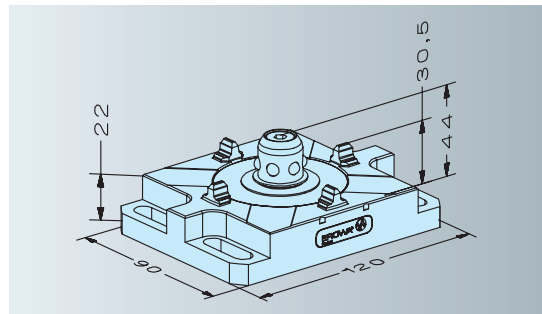
- Version Pneumatic chuck for a direct fit to the Z = 0 base of the WEDM center.
- Application On WEDM centers with manual or automatic workpiece loading.
- Connections On the side for opening, cleaning, reclamping.



### ER-035715 Flat chuck manual PalletSet W / FrameSet



- Version Mechanical chuck for a direct fit to the Z = 0 base of the WEDM center.
- Application On WEDM centers with manual workpiece loading.
- Operation With a manually operated ball lock.

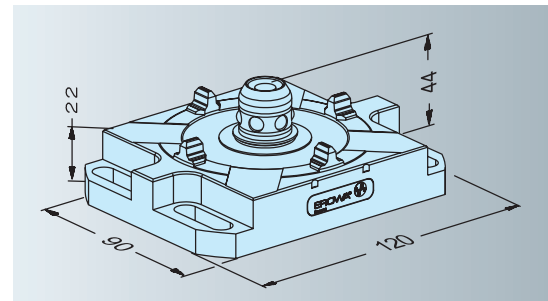


Technical data	Basic WEDM chuck manual
Repeatability	0.002 mm
Clamping power	without reclamping 8'000 N
Generated by	mechanic
Operation	manual
Max. pallet weight	15 kg (without support)

**ER-040641 Basic WEDM chuck  
Basic Tooling**



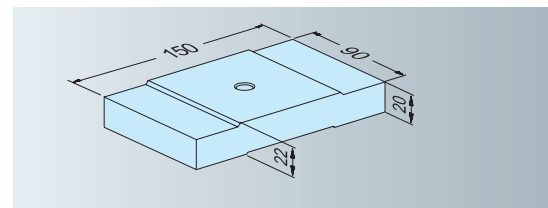
Version Mechanical chuck for a direct fit to the Z = 0 base of the WEDM center.  
 Application On WEDM centers with manual workpiece loading.  
 Operation With a manually operated ball lock.



**ER-062822 Plate FrameSet Fix 200 mm**



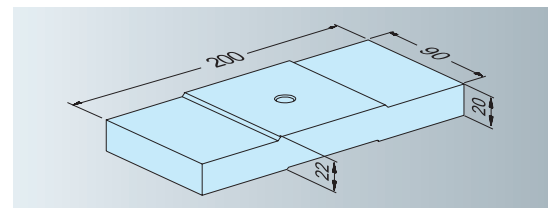
Version Plate to attach the FrameSet clamping frame.  
 Application On WEDM centers with FrameSet clamping frames, to be mounted directly on the Z=0 base.  
 Mounting to the base according to operating instructions.



**ER-062821 Plate FrameSet Fix 150 mm**



Version Plate to attach the FrameSet clamping frame.  
 Application On WEDM centers with FrameSet clamping frames, to be mounted directly on the Z=0 base.  
 Mounting to the base according to operating instructions.



# EROWA Wire EDM Tooling

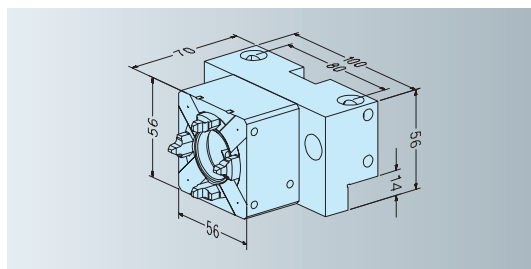
## Interfaces to machine table

Technical data	Chuck RSA 50	QuickChuck 50 RSM
Repeatability	0.002 mm	0.002 mm
Indexing	4 x 90°	4 x 90°
Clamping power	2,800 N	4,000 N
Clamping	Spring power	mechanical
Opening with compressed air, dry	min. 6 bar	
Operation	pneumatic	mechanical

### ER-007851 Chuck 50 RSA / on universal plate UnoSet



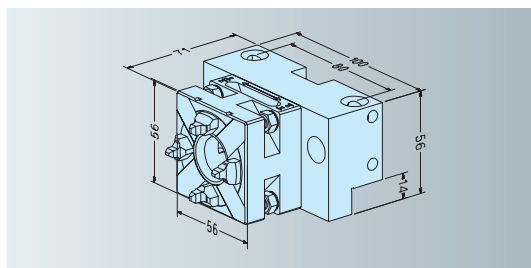
Version Automatic, with pneumatic valve.  
 Application ITS base for the manual or automatic loading of ITS elements.  
 Use On all machine bases and FrameSet beams.  
 Can be used either horizontally or vertically.



### ER-007852 QuickChuck 50 RSM / on universal plate UnoSet



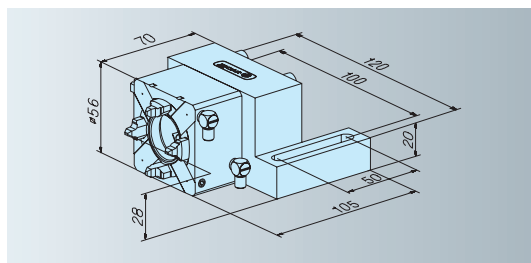
Version Manual.  
 Application ITS base for the manual loading of ITS elements.  
 Use On all machine bases and FrameSet beams.  
 Can be used either horizontally or vertically.



### ER-022583 Clamping chuck 50 RSA / UnoSet on adapter plate R=100 mm



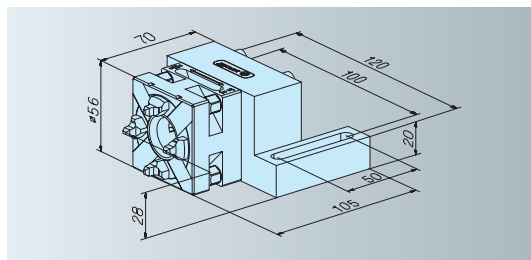
Version Chuck 50 on adapter plate, manual.  
 Application To be fitted directly to any machine bases with attachment boreholes in a 100 mm grid.



### ER-022584 QuickChuck 50 RSM UnoSet on adapter plate R=100 mm

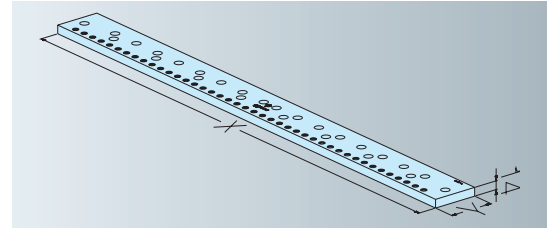


Version Chuck 50 on adapter plate, manual.  
 Application To be fitted directly to any machine bases with attachment boreholes in a 100 mm grid.

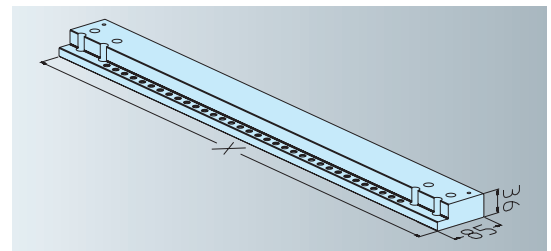


**ER-035690 ManoSet rail P 890 mm XXL**

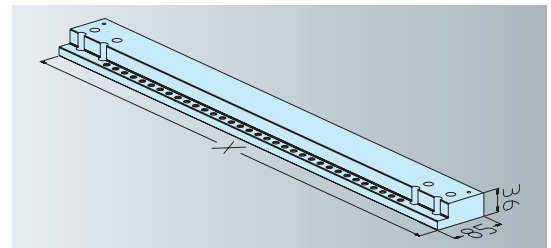
- Version** Supplied: 1 unit.  
Rail for large WEDM centers.  
X = 890 mm, Y = 75 mm.
- Mounting** directly on the Z=0 base.
- Application** To clamp large workpieces with XXL clamping beams 540, ER-037307 or clamping beams 620, ER-034989 (see page 241).
- Note** ManoSet rail XXL suitable for Sodick AQ 750 L and Makino SP 64 (see page 258/259).

**ER-038985 ManoSet rail L Length 850 mm XXL**

- Version** Supplied: 1 unit.  
Rail for large WEDM centers.  
X = 850 mm.
- Mounting** directly on the Z=0 base.
- Application** To clamp large workpieces with XXL clamping beams 540, ER-037307 or clamping beams 620, ER-034989 (see page 241).
- Note** ManoSet rail XXL suitable for Makino EU 64 and SP 64 (see page 258/259).

**ER-012847 ManoSet rail L length 947 mm XXL 1 piece**

- Version** Supplied: 1 unit.  
Rail for large WEDM centers.  
X = 947 mm.
- Mounting** Directly on the Z=0 base.
- Application** To clamp large workpieces with XXL clamping beams 540, ER-037307 or clamping beams 620, ER-034989 (see page 241).
- Note** ManoSet rail XXL suitable for Charmilles CTFI60++ and Sodick AQ 750 L (see page 258/259).



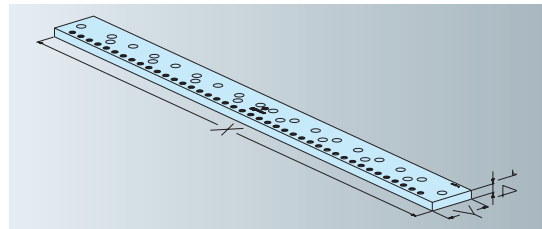
# EROWA Wire EDM Tooling

## Interfaces to machine table

### ER-042904 ManoSet rail P length 890 mm XXL 1 piece



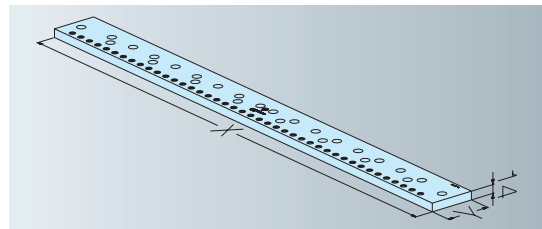
- Version Supplied: 1 unit.  
Rail for large WEDM centers.  
X = 890 mm, Y = 75 mm.
- Mounting directly on the Z=0 base.
- Application To clamp large workpieces with XXL clamping beams 540, ER-037307 or clamping beams 620, ER-034989 (see page 241).
- Note ManoSet rail XXL suitable for Charmilles CT FI 640cc, CT FI 690 and ONA AE 600 (see page 258/259).



### ER-043487 ManoSet Beam P length 860 mm XXL 1 piece



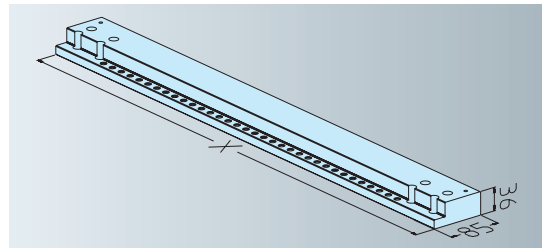
- Version Supplied: 1 unit.  
Rail for large WEDM centers.  
X = 860 mm, Y = 50 mm.
- Mounting directly on the Z=0 base.
- Application To clamp large workpieces with XXL clamping beams 540, ER-037307 or clamping beams 620, ER-034989 (see page 241).
- Note ManoSet rail XXL suitable for Mitsubishi FX 30 / FA30, CT FI6050, Makino SP64 (see page 258/259).



### ER-041430 ManoSet rail L Length 1010 mm XXL



- Version Supplied: 1 unit.  
Rail for large WEDM centers.  
X = 1010 mm.
- Mounting directly on the Z=0 base.
- Application To clamp large workpieces with XXL clamping beams 540, ER-037307 or clamping beams 620, ER-034989 (see page 241).
- Note ManoSet rail XXL suitable for Makino U86 (see page 258/259).



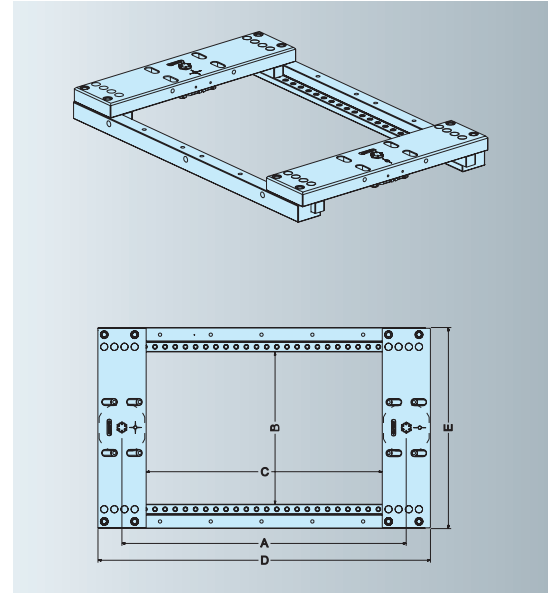
# EROWA Wire EDM Tooling

## Adapters for interfaces

ER-045555	Clamping frame FrameSet 430/220-335
ER-039212	Clamping frame FrameSet 430/300-335
ER-039211	Clamping frame FrameSet 490/220-395
ER-039213	Clamping frame FrameSet 500/300-405
ER-039214	Clamping frame FrameSet 560/300-465
ER-039215	Clamping frame FrameSet 650/300-555
ER-039216	Clamping frame FrameSet 650/380-555
ER-039217	Clamping frame FrameSet 710/380-615



- Version Clamping frame for the multiple palletization of workpieces.
- Application To fit on EROWA flat chucks and FrameSet Fix plates (see page 230/231).
- Options See Clamping beams and clamping elements for the EROWA Wire Tooling System, starting from page 241.



	A	B	C	D	E
ER-045555	430	220	335	525	396
ER-039212	430	300	335	525	396
ER-039211	490	220	395	585	316
ER-039213	500	300	405	595	396
ER-039214	560	300	465	655	396
ER-039215	650	300	555	745	396
ER-039216	650	380	555	745	476
ER-039217	710	380	615	805	476

# EROWA Wire EDM Tooling

## Adapters for interfaces

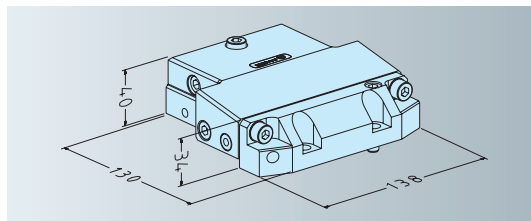
### ER-030923 Pendulum holder 3D PalletSet W



**Version** Pendulum head for automatic and manual loading.  
G-Centering plates for increased durability.

**Application** Basis for all the other clamping elements such as UniVise square, frame pallet, vise and beam pallet.

**Note** Adjustable in the X-, Y- and Z-axes.  
Slim Line Version 15 mm reduced in height for best access of lower wire guide



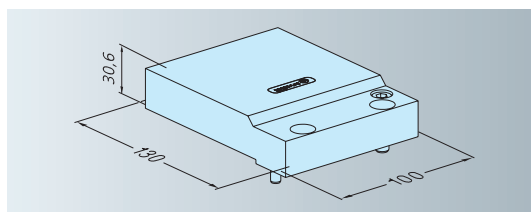
### ER-030678 Fix holder PalletSet W



**Version** Standard element for automatic and manual loading.

**Application** Base for all other clamping elements such as UniVise square, frame plate, vise and beam pallet.

**Note** Adjustable in the C-axis.



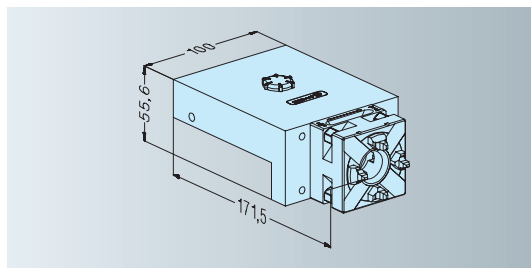
### ER-030645 UnoSet adapter PalletSet W centering plate G



**Version** System adapter of PalletSet W to UnoSet.

**Application** Clamps workpieces of system size ITS 50 horizontally into the workspace.

**Note** Fits all UnoSet and ITS 50 clamping elements.



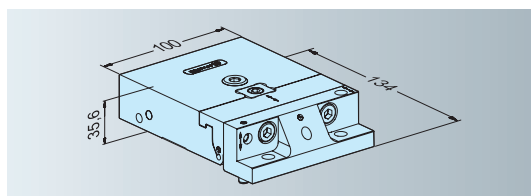
### ER-031942 Basic WEDM pendulum holder Basic Tooling



**Version** Pendulum head for manual loading.

**Application** For use on the Basic WEDM chuck. As a basis for all other clamping elements like UniVise, square, vise and beam pallet.

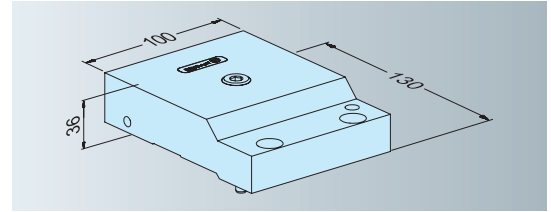
**Note** Adjustable in the X-, Y- and Z-axes.



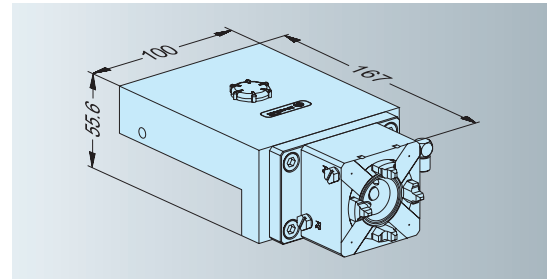


**ER-033955 Basic WEDM fix holder  
Basic Tooling**

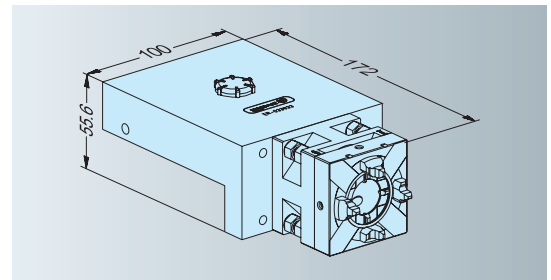
Version Standard element for manual loading.  
 Application For use on the Basic WEDM chuck.  
 As a basis for all other clamping elements like UniVise,  
 square, vise and beam pallet.  
 Note Adjustable in the C-axis.

**ER-030643 UnoSet adapter with RSA 50  
PalletSet W**

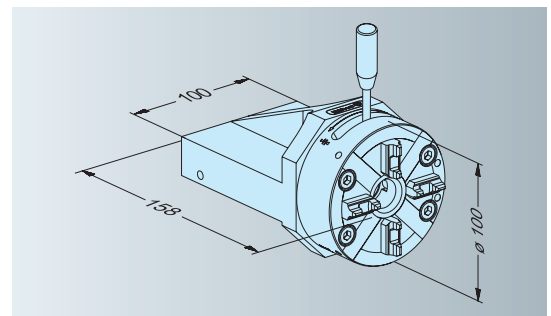
Version System adapter from Palletset W to UnoSet.  
 Application Clamps workpieces of the ITS 50 system size  
 horizontally into the workspace.  
 Clamping power 2800 N  
 Note Suitable for all UnoSet and ITS 50 clamping elements.

**ER-033933 PSW adapter QuickChuck 50 Combi  
PalletSet W / centering plate G**

Version System adapter from Palletset W to UnoSet and/or  
 Compact.  
 Application Clamps workpieces of the ITS 50 and Compact system  
 sizes horizontally into the workspace.  
 Note Suitable for all UnoSet and ITS 50 clamping elements and  
 Compact clamping elements.

**ER-033974 PSW adapter QuickChuck 100  
PalletSet W**

Version System adapter from Palletset W to UnoSet, ITS 50,  
 holder  $\varnothing 72$ , and pallets 148, 115.  
 Application Clamps workpieces of the ITS 50 and ITS 100 system sizes  
 horizontally into the workspace.  
 Note Suitable for all UnoSet clamping elements.



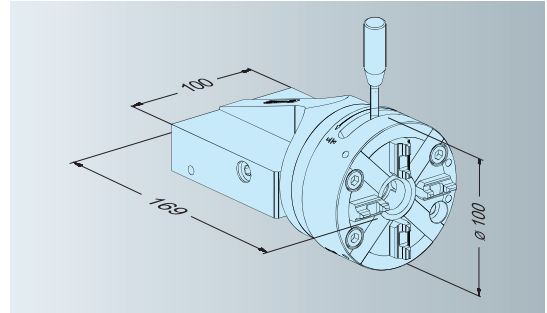
# EROWA Wire EDM Tooling

## Adapters for interfaces

### ER-035994 PSW QuickChuck 100, 360° rotatable



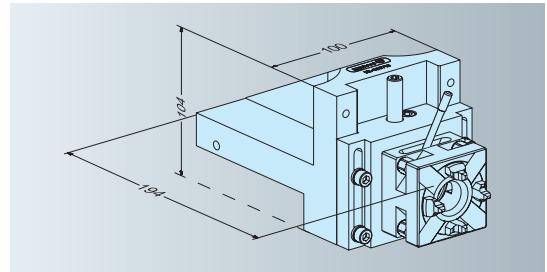
- Version** System adapter from Palletset W to UnoSet, ITS 50, holder  $\varnothing 72$ , and pallets 148, 115.
- Application** Clamps workpieces of system size ITS 50 and ITS 100 horizontally into the working range. Can be rotated around 360°.
- Note** Fits all UnoSet clamping elements and ITS 115/148 pallets.



### ER-038710 Adapter Z-Vario PalletSet W / UnoSet RSM



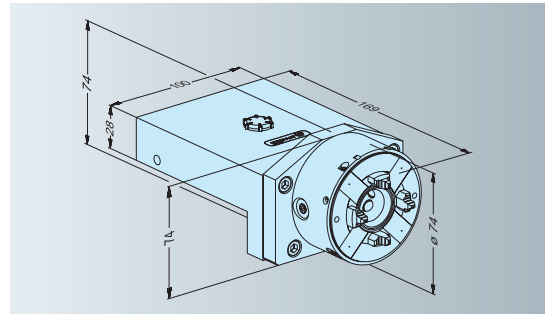
- Version** System adapter from Palletset W to UnoSet. Z-axis height adjustable.
- Application** To clamp UnoSet and electrodes/workpieces in the ITS 50 system size horizontally into the workspace.
- Note** Suitable for use with the whole ITS 50 system and electrode holders.



### ER-039795 Holder $\varnothing 72$ PalletSet W



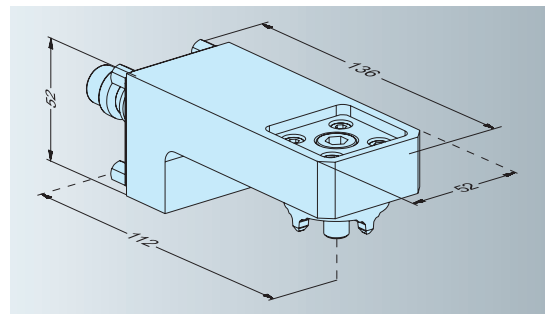
- Version** System adapter from Palletset W to ITS 50 holder  $\varnothing 72$
- Application** Clamps workpieces of holder  $\varnothing 72$  size horizontally into the workspace.
- Operation** Pneumatically with air jet.
- Note** Suitable for all holders  $\varnothing 72$  and ITS 50.



### ER-038711 Extension arm Z-Vario PalletSet W / UnoSet



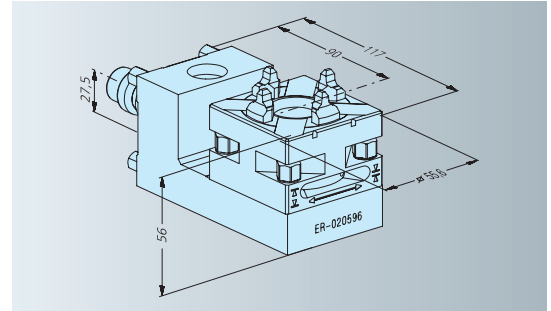
- Version** Extension arm with centering system connection to ITS 50. Accommodates workpieces and electrodes.
- Application** Accommodation of workpieces and electrodes for machining in a horizontal or vertical position.
- Load** Max. 6 kg
- Note** Can be used in combination with adapter Z-Vario PSW/UnoSet. Indexation around 4x90°.



**ER-020596 Extension arm UnoSet**



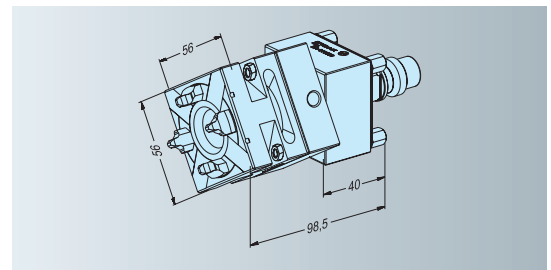
Clamping range 80mm  
 Max. load 6 kg  
 Version The extension arm UnoSet with QuickChuck 50 is suitable for the accommodation of workpieces and electrodes that have to be machined in a vertical and in a horizontal position.  
 Note Indexable around 4x90°.



**ER-007877 TurnFix 50 UnoSet**



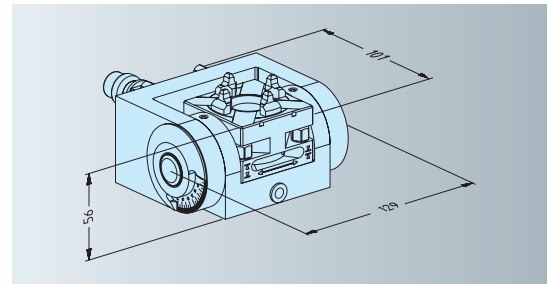
Version Chuck 50, manual, with ITS base plate, continuously able to rotate round 360°.  
 Application ITS base for the manual loading of ITS elements carrying workpieces that require angular positions.  
 Use On any ITS chuck of system size 50.



**ER-028471 Angle clamping unit UnoSet for QuickChuck 50**



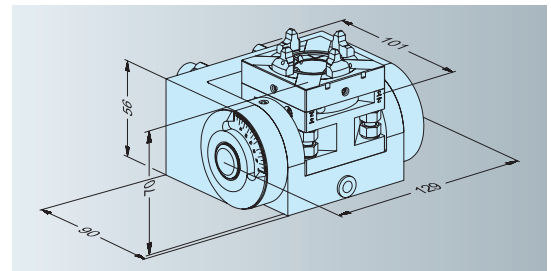
Version Chuck 50, angle to be set with the vernier.  
 Application WEDM or EDM.  
 To fit lateral sprues to casting tools.  
 Max. load 6 kg.  
 Max. work-piece size 100 x 100 x 100 mm.  
 Connections Flushing connection in place.



**ER-027640 Square clamping unit UnoSet for CompactChuck 50 Combi**



Version CompactChuck 50 Combi.  
 Angle to be set with the vernier.  
 Angled clamping unit made of corrosion-resistant steel.  
 Application WEDM or EDM.  
 Connections Flushing connection in place.



# EROWA Wire EDM Tooling

## Adapters for interfaces

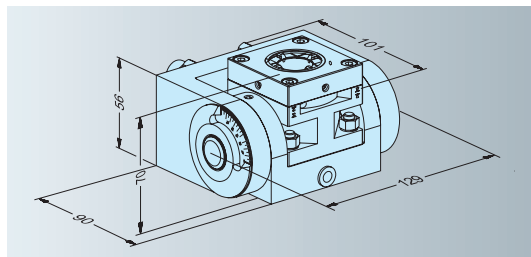
### ER-027641 Square clamping unit UnoSet for CompactChuck M



Version CompactChuck manual.  
Angle to be set with the vernier.  
Angled clamping unit made of corrosion-resistant steel.

Application WEDM or EDM.

Connections Flushing connection in place.



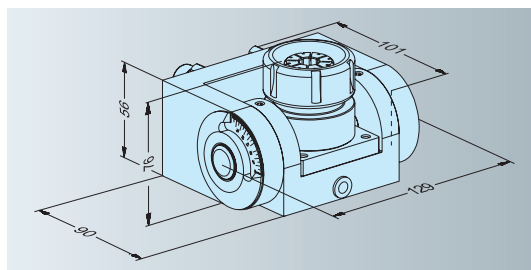
### ER-028480 Angle clamping unit UnoSet for collet chuck electrode holder



Version Angled clamping unit made of corrosion-resistant steel, except collet chuck unit.  
Angle to be set with the vernier.

Application WEDM or EDM.

Connections Flushing connection in place.



# EROWA Wire EDM Tooling Fixtures for adapters

**ER-017645 Clamping beam 220 mm**

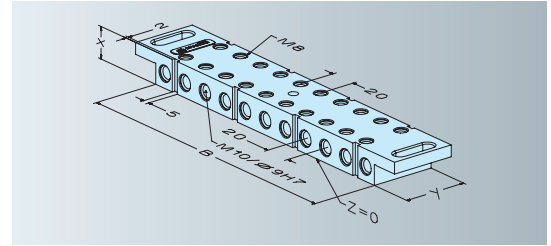
**ER-017646 Clamping beam 300 mm**

**ER-017647 Clamping beam 380 mm**

**ER-017648 Clamping beam 460 mm**



Application To clamp workpieces with clamping claws on Z-discs.  
Version Cross boreholes, ground.



Clamping Beam	X	Y
ER-017645	22 mm	46 mm
ER-017646	25 mm	46 mm
ER-017647	25 mm	46 mm
ER-017648	36 mm	56 mm

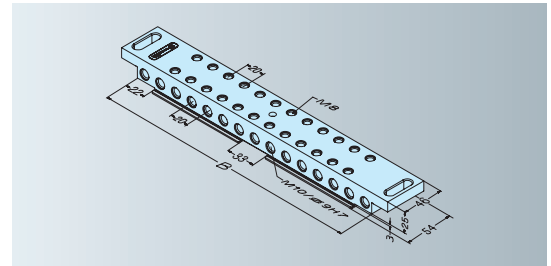
**ER-021126 Double-sided clamping beam 300 mm**

**ER-021127 Double-sided clamping beam 380 mm**

**ER-021128 Double-sided clamping beam 460 mm**



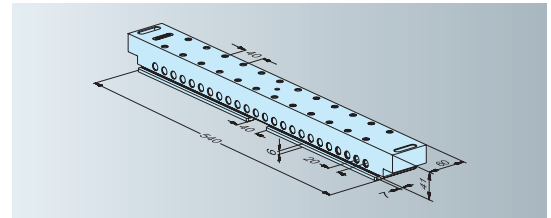
Application To clamp workpieces with clamping claws on Z-support ledges.  
Version Cross boreholes, ground.



**ER-037307 Double-sided clamping beam 540 mm  
ManoSet XXL**



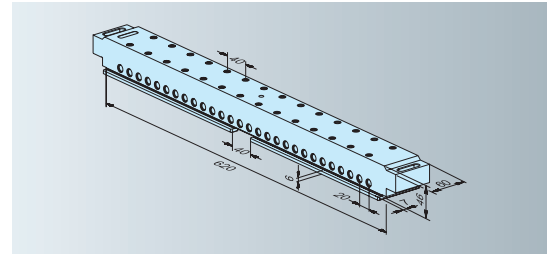
Application Clamping of workpieces with clamping claws on Z-support ledges.



**ER-034989 Double-sided Clamping beam 620 mm  
ManoSet XXL**



Application Clamping of workpieces with clamping claws on Z-support ledges.



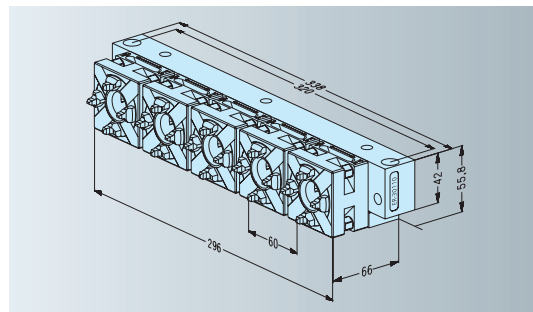
# EROWA Wire EDM Tooling

## Fixtures for adapters

### ER-030110 Beam 5-fold 300 QuickChuck 50



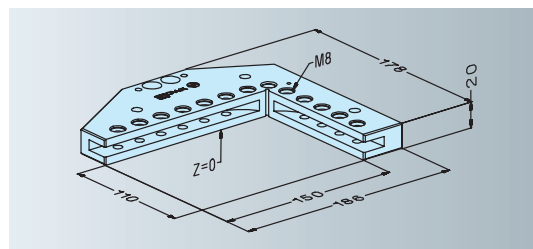
Version Five chucks 50, manual, in a row.  
 Application ITS adapter for the manual loading of five ITS elements.  
 Use On all FrameSet clamping frames. Width 300 mm. In combination with the basic adapter set (ER-016652) on the WEDM machine table.



### ER-018938 UniVise square PalletSet W



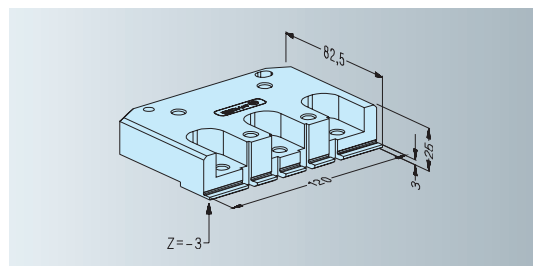
Version Square with all the clamping accessories.  
 Application To be fitted to fix holders or pendulum holders.  
 Note Max. load: 10 kg.



### ER-018940 Vise PalletSet W



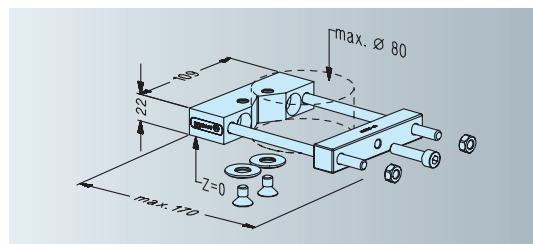
Version Clamping element with clips for one-sided attachment to workpieces.  
 Application To be fitted to fix holders or pendulum holders.  
 Note Max. load: 12 kg.



### ER-019248 Prism holder 80 PalletSet W



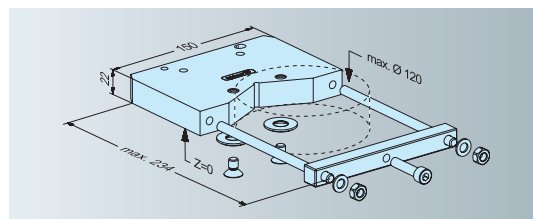
Version Prism and clamping part with detachable Z-supports.  
 Application Clamping of cylindrical workpieces of up to  $\varnothing 80$  mm.  
 Assembly To be fitted to the front of beam pallet ER-018937 or clamping beams (cf. p 241).  
 Note Max. load: 6 kg.



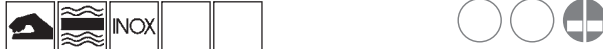
### ER-031179 Prism holder 120 mm PalletSet W



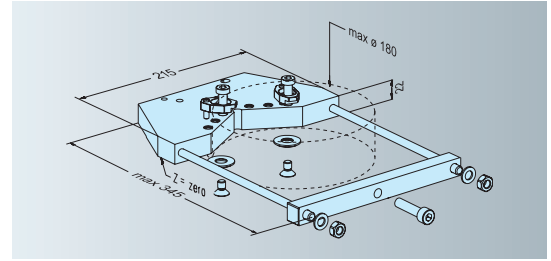
Version Prism and clamping bars with detachable Z-supports.  
 Application To clamp cylindrical workpieces of up to  $\varnothing 120$  mm.  
 Mounting directly to fixholder or pendulum holder.  
 Note Max. load: 10 kg.



**ER-038891 Prism holder  $\varnothing$  10 - 180 PalletSet W**



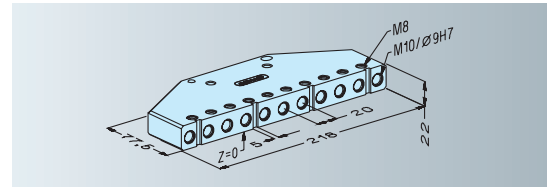
**Version** Prism and clamping bars with detachable Z-supports.  
**Application** To clamp cylindrical workpieces of up to  $\varnothing$  180 mm.  
**Mounting** directly to fixholder or pendulum holder.  
**Note** Max. load: 12 kg.



**ER-018937 Beam pallet PalletSet W**



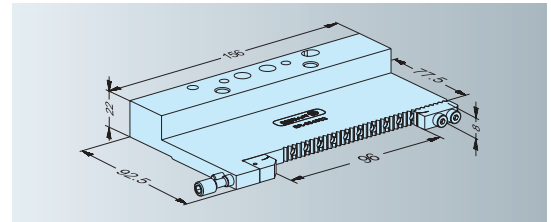
**Version** Pallet to accommodate various clamping elements. Includes Z-supports and clips.  
**Application** To be fitted to fix holders or pendulum holders 3D.  
**Options** Prism holders and BeamVise clamping elements.



**ER-054922 Flat vise 8 mm PalletSet W**



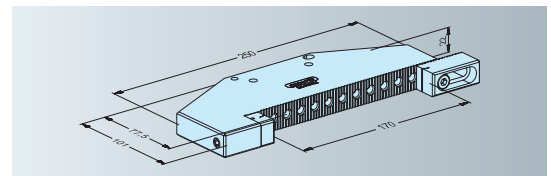
**Version** One movable jaw and one fixed jaw. Hardened, ground and corrosion-resistant.  
**Clamping range** 0 - 96 mm.  
**Max. load** 5 kg.  
**Application** Lateral clamping of workpieces machined outside of up to 96 mm. To be fitted to fixholder or pendulum holder.



**ER-055774 Flat vise 170 mm PalletSet W**



**Version** One movable and one fixed jaw. Hardened, ground and corrosion-resistant.  
**Clamping range** 0 - 170 mm.  
**Max. load** 12 kg.  
**Application** Lateral clamping of workpieces of 0-170 mm machined from the outside. To be fitted to fix or pendulum holders.



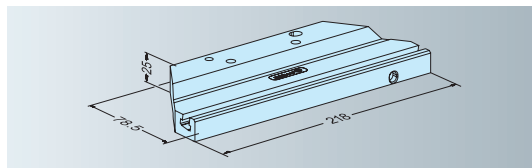
# EROWA Wire EDM Tooling

## Fixtures for adapters

### ER-031945 Basic holder PalletSet W



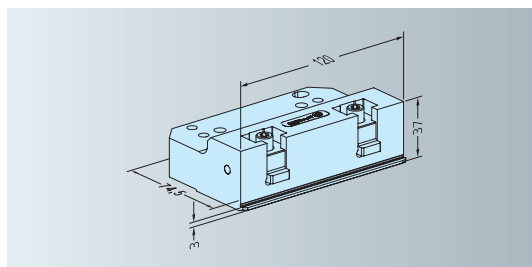
Version To accommodate various clamping elements.  
 Application To fit to fixholder or pendulum holder 3D.  
 Options Jaw holder ER-033958 or bracket holder ER-031952.



### ER-025895 Vise PalletSet W 40 mm



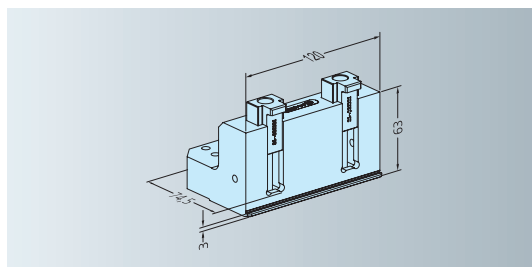
Version Vise with fixed Z-lip and jaws attached from above.  
 Hardened and ground.  
 Clamping range max. 150 x 150 x 40 mm.  
 Max. load 12 kg.  
 Application Lateral clamping of workpieces of 0 -150 mm machined from the outside. To be fitted to fix or pendulum holders.



### ER-025896 Vise PalletSet W 100 mm



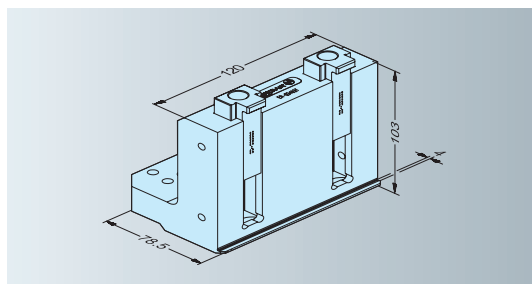
Version Vise with fixed Z-lip and jaws fitted from above.  
 Application To clamp workpieces of up to 100 mm in height.  
 To be fitted to fixholder or pendulum holder.  
 Max. clamping range 150 x 150 x 100 mm.  
 Max. load 12 kg.



### ER-034631 Vise PalletSet W 140 mm



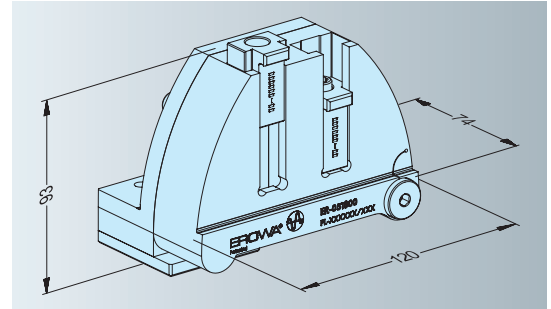
Version Vise with fixed Z-lip and jaws fitted from above.  
 Hardened and ground.  
 Application To clamp workpieces of up to 140 mm in height.  
 To be fitted to fixholder or pendulum holder.  
 Max. load 12 kg.  
 Max. clamping range 150 x 100 x 140 mm.



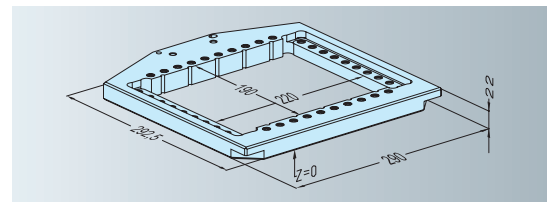


**ER-051800 Sine vise PalletSet W**

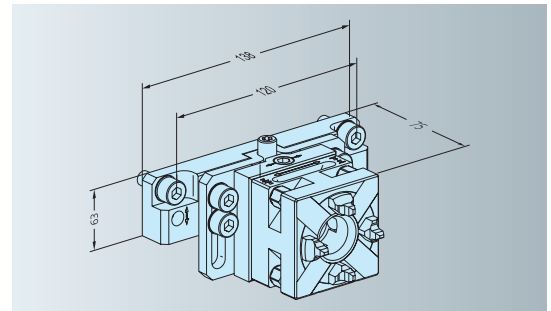
Version	Vise with adjustable angle position and jaws fitted from above. Hardened and ground.
Application	To clamp workpieces at angles adjustable between 0-90°. To fit to fixholder or pendulum holder.
Clamping range	min. 10 mm / max. 75 mm.
Max. load	12 kg.

**ER-018941 Frame pallet PalletSet W**

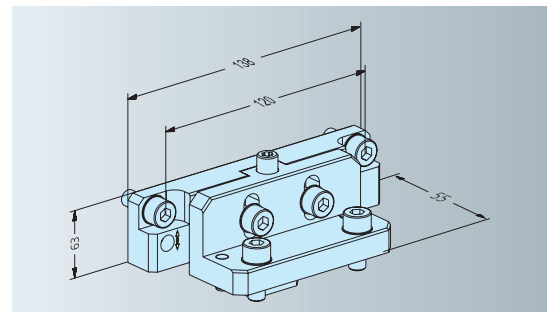
Version	Clamping frame for multiple palletization of workpieces.
Application	To be fitted to fix holders or pendulum holders.
Option	Clamping beam 220 ER-017645.
Note	To support the clamping frame, use Z-supports.

**ER-029228 Z-Vario QuickChuck PalletSet W**

Version	Fits 3D ER-030923 pendulum holder. Hardened and ground.
Max. load	8 kg.
Clamping range	max. height adjustment 30 mm.
Application	To machine electrodes in PSW which have to be adjusted in height.

**ER-029229 Z-Vario clamping elements PalletSet W**

Version	Fits 3D ER-030923 pendulum holder. Hardened and ground.
Max. load	8 kg.
Clamping range	max. height adjustment 30 mm.
Application	PSW clamping elements can also be adjusted in height.

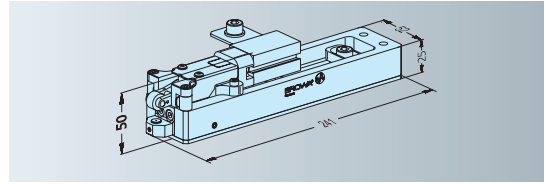


# EROWA Wire EDM Tooling Fixtures for adapters

**ER-025115 Z-support PalletSet W universal pneumatic, 1 pair**



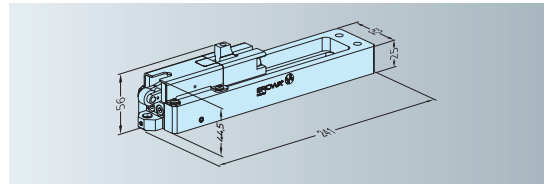
Version 1 pair of supports. Hardened and ground.  
 Mounting Directly on the Z=0 base of the WEDM center.  
 Operation With manual control unit.  
 Application Support and clamping of the frame plate with weights of up to 30kg. Stabilizes the frame plate in case of high flushing pressure.



**ER-025116 Z-support PalletSet W universal manual 1 pair**



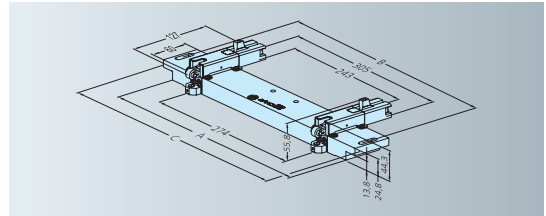
Version 1 pair of supports. Hardened and ground.  
 Mounting Directly on the Z=0 base of the WEDM center.  
 Operation Manually.  
 Application Support and clamping of the frame plate with weights of up to 30 kg. Stabilizes the frame plate in case of high flushing pressure.



**ER-025100 Z-support beam 300 PalletSet W manual**  
**ER-025101 Z-support beam 380 PalletSet W manual**  
**ER-027205 Z-support beam 460 PalletSet W manual**



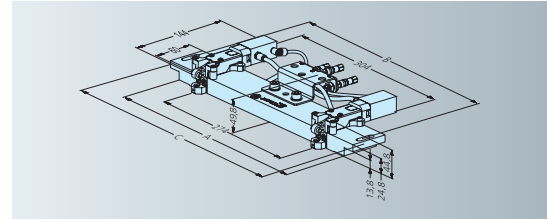
Version Support beam for use in EROWA ManoSet.  
 Operation Manually.  
 Application Support and clamping of the frame plate with weights of up to 30 kg in combination with EROWA ManoSet. Stabilizes the frame plate in case of high flushing pressure.



ER-025027	Z-support beam 300 PalletSet W pneumatic
ER-025030	Z-support beam 380 PalletSet W pneumatic
ER-028306	Z-support beam 460 PalletSet W pneumatic



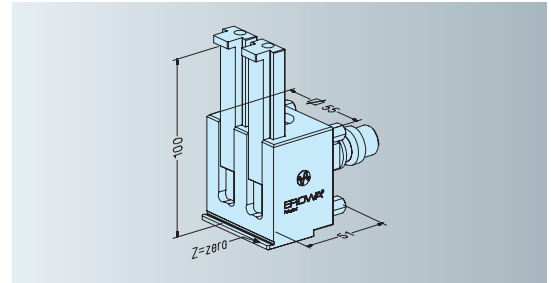
Version Support beam for use in EROWA ManoSet.  
 Operation Pneumatically.  
 Application Support and clamping of the frame plate with weights of up to 30kg in combination with EROWA ManoSet. Stabilizes the frame plate in case of high flushing pressure.



ER-008814	Precision vise 0 - 100 UnoSet
-----------	-------------------------------



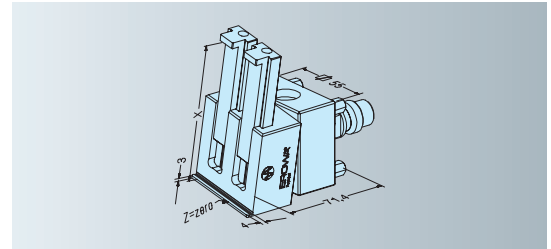
Clamping range Ranges from 0 to 100 mm.  
 Max. extension 40 mm at 100 mm workpiece height.  
 Max. load 5 kg.  
 Application Workpiece fixed. Including three sets of clamping jaws.



ER-007935	Rotary vise 0 - 100 UnoSet
-----------	----------------------------



Clamping range 0-100 mm.  
 Max. extension 40 mm with 100 mm part height.  
 Max. load 5 kg.  
 Application Continuously able to rotate around 360°. Set with three pairs of clamping jaws.



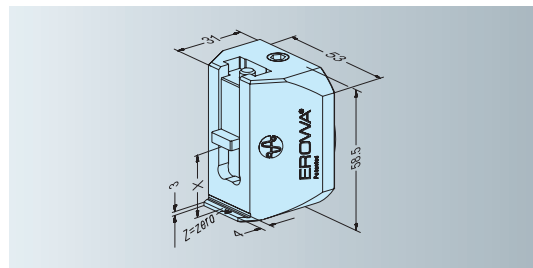
# EROWA Wire EDM Tooling

## Fixtures for adapters

### ER-014698 VeeVise UnoSet



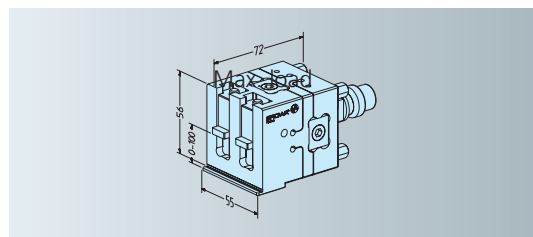
Clamping range	0–100 mm.
Max. extension	40 mm with 100 mm part height.
Max. load	5 kg.
Application	Clamping component without ITS connection. To fit to an existing pendulum rotating adapter.



### ER-008842 Pendulum vise 0 - 100 UnoSet



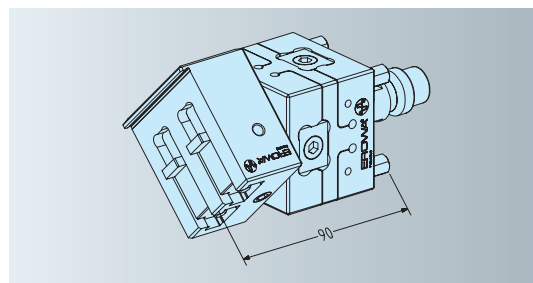
Clamping range	Ranges from 0 to 100 mm.
Max. extension	40 mm at 100 mm workpiece height.
Max. load	5 kg.
Application	Workpiece adjustable in two axes. Including three sets of clamping jaws.



### ER-008856 Rotatable pendulum vise 0 - 100 UnoSet



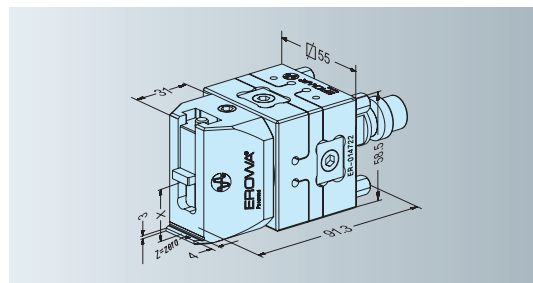
Clamping range	0–100 mm.
Max. extension	40 mm with 100 mm part height.
Max. load	5 kg.
Application	For adjustable workpiece positioning in three axes. Continuously able to rotate around 360°. Set with three pairs of clamping jaws.



### ER-014722 VeeVise TP UnoSet



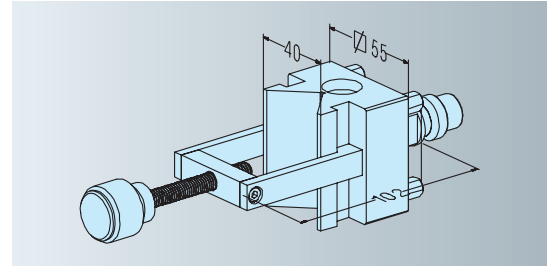
Clamping range	0–100 mm.
Max. extension	40 mm with 100 mm part height.
Max. load	5 kg.
Application	For adjustable workpiece positioning in three axes. Continuously able to rotate around 360°. Set with three clamping jaws.



**ER-016691 V-block holder UnoSet**



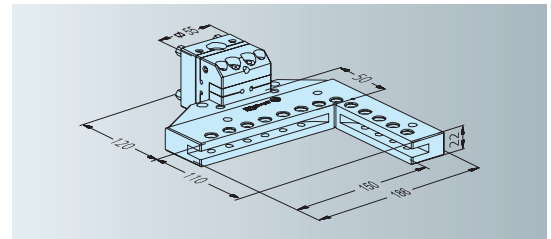
Clamping range Parts up to  $\varnothing$  40 x H 150 mm.  
 Max. load 1.5 kg.  
 Application To clamp parts in prismatic slot. Parallel and angular precision 0.01 mm.



**ER-015670 UniVise P UnoSet**



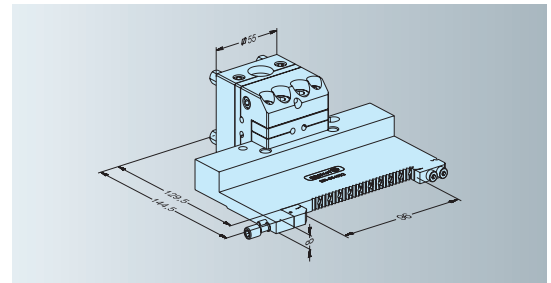
Clamping range Round parts:  $\varnothing$  5–85 mm.  
 Flat parts: 140 x 100 mm.  
 Max. load 5 kg.  
 Application Complete set with all clamping accessories. Workpiece adjustable in three axes.



**ER-055535 Flat vise 8 mm UnoSet**



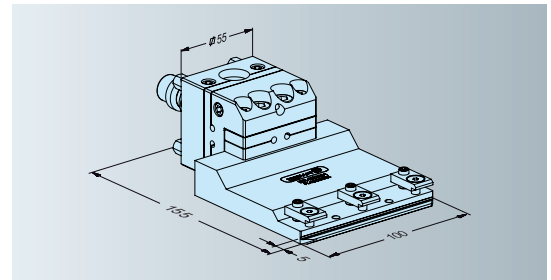
Version One movable jaw and one fixed jaw. Hardened, ground and corrosion-resistant.  
 Clamping range 0 - 96 mm.  
 Max. load 5 kg.  
 Application Lateral clamping of workpieces machined outside of 0 - 96 mm.



**ER-052091 Support straight UnoSet with mini clamp**



Version Vertical clamping of workpieces.  
 Clamping range 0 - 50 mm.  
 Max. load 5 kg.  
 Application Vertical clamping of workpieces.



# EROWA Wire EDM Tooling

## Clamping elements for fixtures

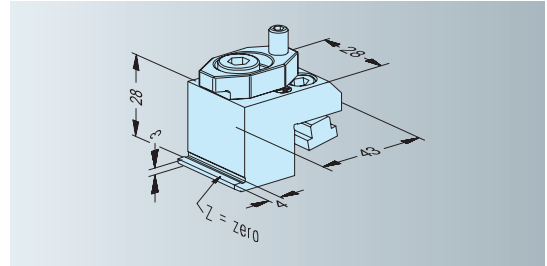
### ER-031952 Bracket holder PalletSet W (1 pair)



**Version** Two movable vertical jaws. Hardened, ground and corrosion-resistant.

**Application** Variable vise to be fitted to basic holder PSW.

**Mounting** Directly to basic holder ER-031945, using the fittings supplied.



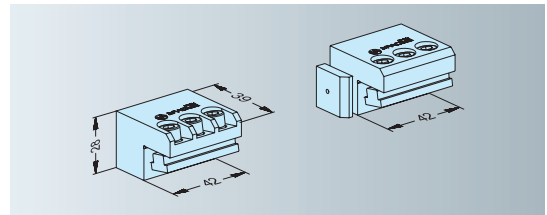
### ER-033958 Jaw holder PalletSet W



**Version** One movable jaw and one fixed jaw. Hardened, ground and corrosion-resistant.

**Application** Variable vise to be fitted to basic holder PSW.

**Mounting** Directly to basic holder ER-031945, using the fittings supplied.



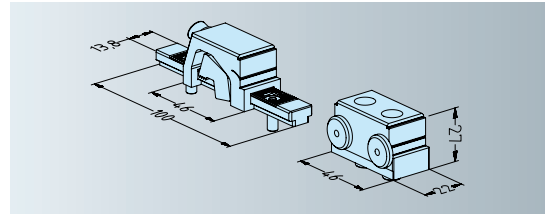
### ER-062788 BeamVise Single



**Version** One movable and one fixed stop jaw. Hardened, ground, corrosion-resistant.

**Application** Variable vise laterally on EROWA clamping beams.

**Assembly** With the enclosed assembly elements to the desired clamping beam Pallet Set W ER-018937.



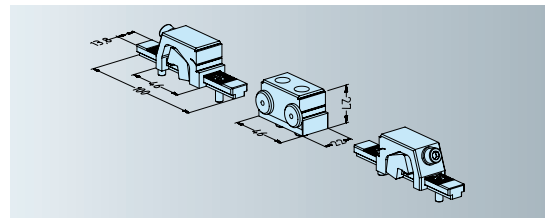
### ER-062789 BeamVise Twin



**Version** Two movable stop jaws and one fixed stop jaw. Hardened, ground, corrosion-resistant.

**Application** Variable vise laterally on EROWA clamping beams.

**Assembly** With the enclosed assembly elements to the desired clamping beam PalletSet W ER-018937.



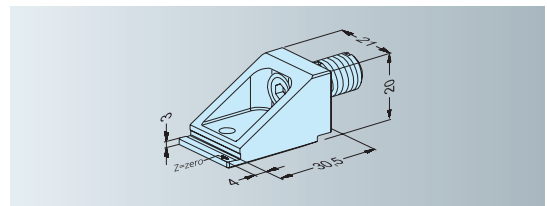
### ER-008231 Mini distance support



**Application** As side support for workpieces, or for clamping small, flat single parts.

**Presetting** The support surface height corresponds to  $Z = 0$  and is not adjustable.

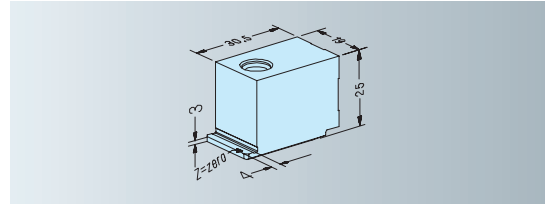
**Use** On all clamping and gripping beam ER-018937.



**ER-008875 Fixed distance support**



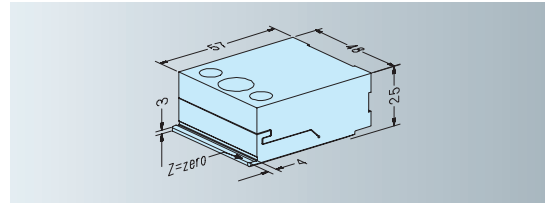
**Application** As side support for workpieces, or for clamping small single parts.  
**Presetting** The support surface height corresponds to  $Z = 0$  and is not adjustable.  
**Use** On all clamping and gripping beams.



**ER-008873 Adjustable distance support**



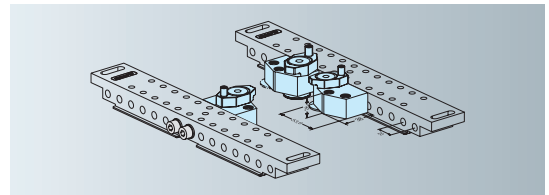
**Application** As side support for workpieces, or for clamping small single parts.  
**Presetting** The support surface height corresponds to  $Z = 0$  and is adjustable  $\pm 0.15$  mm.  
**Use** On all clamping and gripping beams.



**ER-007990 DiaFix 3 pieces**



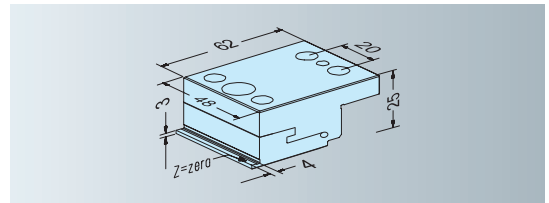
**Application** For supporting round parts with diameters starting at 50 mm, or as a side support for rectangular workpieces.  
**Presetting** The support surface height corresponds to  $Z = 0$  and is not adjustable.  
**Use** On all clamping beams.



**ER-008221 Z beam**



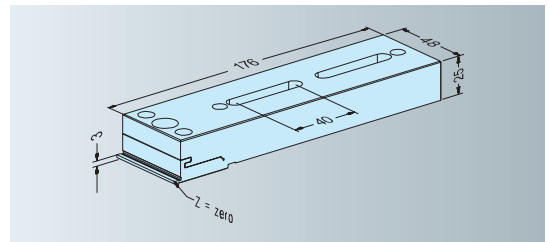
**Application** As side support for workpieces, or for clamping small single parts.  
**Presetting** The support surface height corresponds to  $Z = 0$  and is adjustable  $\pm 0.15$  mm.  
**Use** On all plates and beams with  $Z = + 14$  m.



**ER-008220 Z universal support**



**Application** As side support for workpieces, or for clamping small single parts.  
**Presetting** The support surface height corresponds to  $Z = 0$  and is adjustable  $\pm 0.15$  mm.  
**Use** On all carrier plates and bases with  $Z = 0$ .



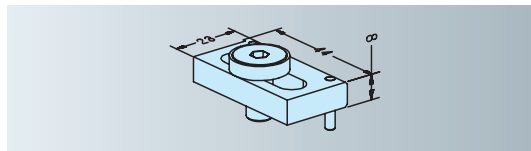
# EROWA Wire EDM Tooling

## Clamping elements for fixtures

### ER-016657 BeamStop set



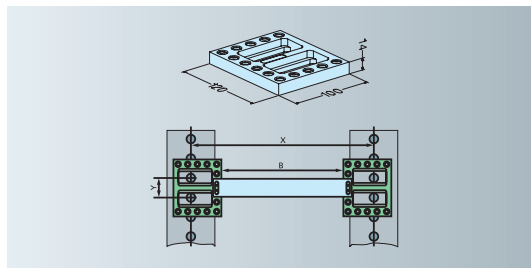
- Version Set of two stops for EROWA beams. Hardened, ground, corrosion-resistant.
- Application On ManoSet base rails, on Basic Adapter and in RoboSet Clamping frames.
- Assembly With the enclosed bolts.



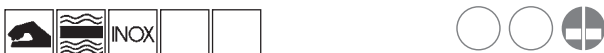
### ER-016652 Basic adapter set, 120x100x14 mm



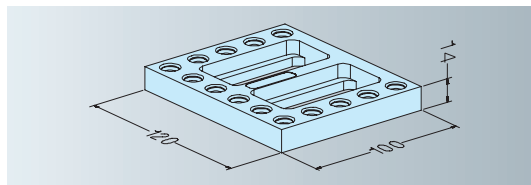
- Version A pair of ground, hardened, corrosion-resistant steel plates with variable assembly hole grids, including BeamStop.
- Application Base on WEDM machines unequipped with tooling system for the use of EROWA ManoSet clamping beams.
- Assembly With the enclosed assembly elements directly onto the existing Z-zero machine structure.



### ER-017198 Basic adapter 120x100x14 mm



- Version A ground, hardened, corrosion-resistant plate with variable assembly hole grids.
- Application Base on WEDM machines with no tooling system. With chucks ER-007851/ER-007852.
- Assembly With the enclosed bolts directly onto the existing Z-zero base.





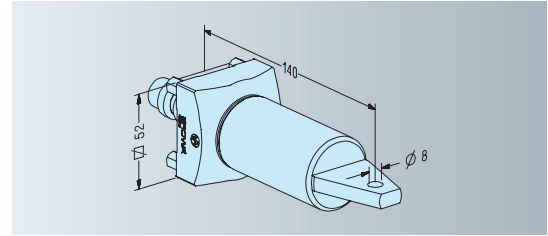
# EROWA Wire EDM Tooling

## Accessories

### ER-012727 Reference pin UnoSet



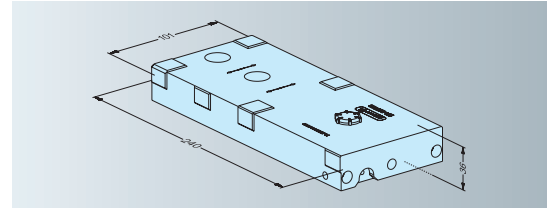
Version Hardened, ground, borehole  $\varnothing$  8 mm.  
 Application To determine reference measurements on horizontal chucks.



### ER-055158 Alignment pallet for PalletSet W



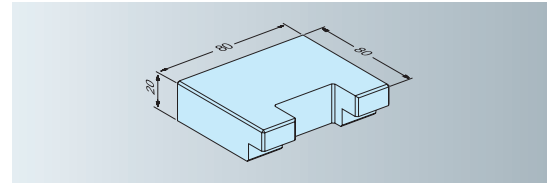
Version Hardened, ground gauge with lateral reference surfaces and two defined reference boreholes.  
 Application To determine the reference point and to align chucks.



### ER-022669 Bracket for flat chuck FSF without fixing borehole, 2 pieces



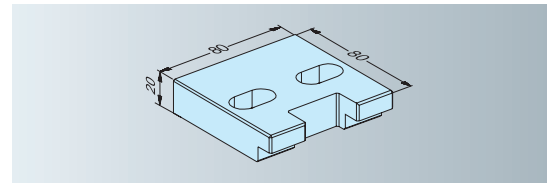
Version Steel, unhardened. Set of 2.  
 Application To fit flat chucks to WEDM centers.



### ER-022670 Bracket for flat chuck FSF Agie, 2 pieces



Version Steel, with attachment boreholes. Set of 2.  
 Application To fit flat chucks to Agie WEDM centers.

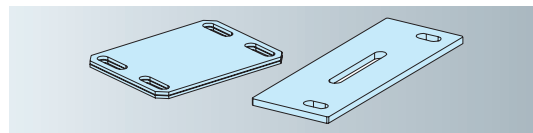


# EROWA Wire EDM Tooling Accessories

## ER-028913 Insulation set PalletSet W



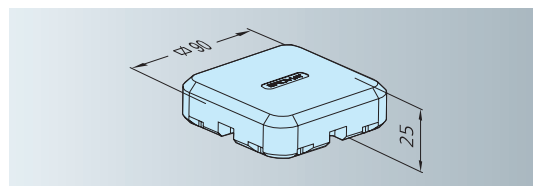
Application To fit underneath the flat chucks and Z-supports to insulate the tooling system.



## ER-026768 Cover for flat chuck



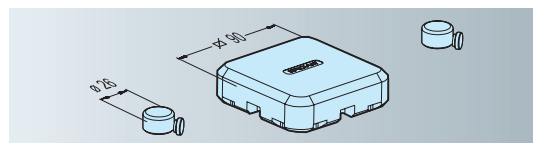
Version Cover for flat chucks  
Application Protects flat chucks that are not in use against contamination and damage.



## ER-027695 Cover for flat clamping chuck PalletSet W



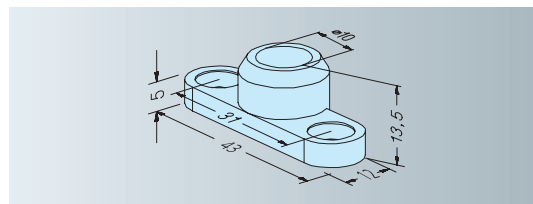
Version Set consisting of 2 covers for flat chucks and 4 covers for Z-supports.  
Application Protects flat chucks and Z-supports that are not in use against contamination and damage.



## ER-035156 EWIS™ Rapid chip with chip holder long with chip $\varnothing 12,4 \times 2$ mm



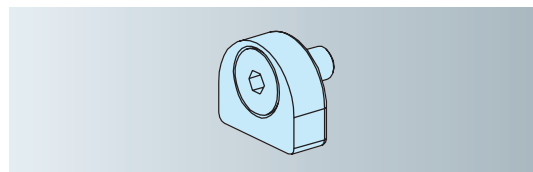
Version Holder with built-in datacarrier.  
EWIS™ Chip: read only.  
Application With EROWA Collet Chuck holders and Square 15/25 holders.  
Mounting With supplied M4 bolts.



## ER-035294 EWIS™ Rapid chip with chip holder RCS with chip $\varnothing 12,4 \times 2$ mm



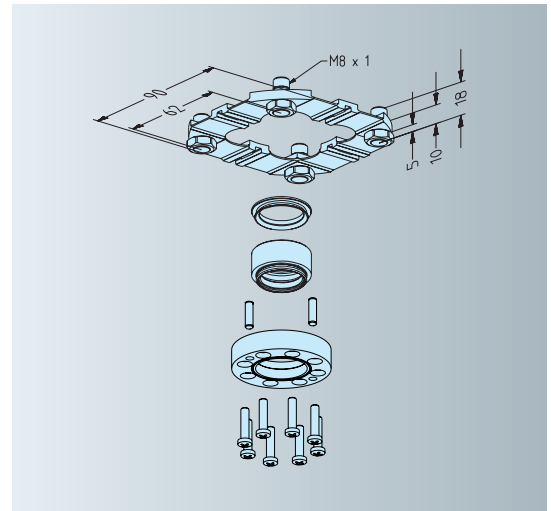
Version Holder with built-in datacarrier.  
EWIS chip: read only.  
Application To build into RCS coupling, PalletSet W holder and Basic WEDM holder.



**ER-030671 Centering plate, G100 M8 x 1 PalletSet W  
 5 pieces**



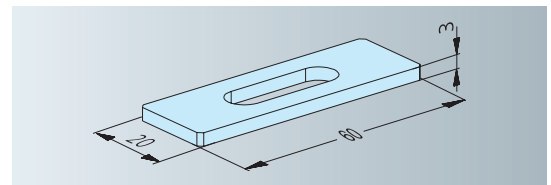
Version Set of 5, including support feet.  
 Application To be fitted directly to workpiece and electrodes to be used on flat chucks.



**ER-008910 Spacer plate 3 mm  
 8 pieces**



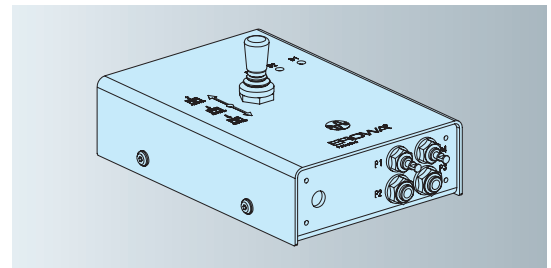
Version Set of 8 plates. Ground, hardened.  
 Application To fit underneath clamping beams to raise the Z-support by 3 mm. This prevents collisions in the working range of the lower flushing nozzles.



**ER-008988 Manual control unit**



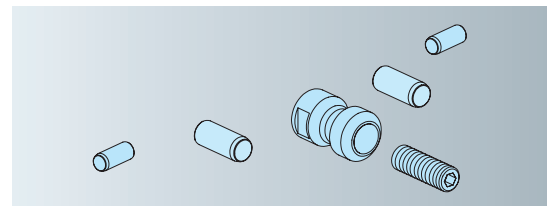
Version Manual valve to control all the functions of ITS, ITS Compact CombiChuck, PowerChuck P and UPC: opening/reclamping/cleaning.  
 Application Operation of chucks on machines.



**ER-018936 GripperLink RCS PalletSet W**



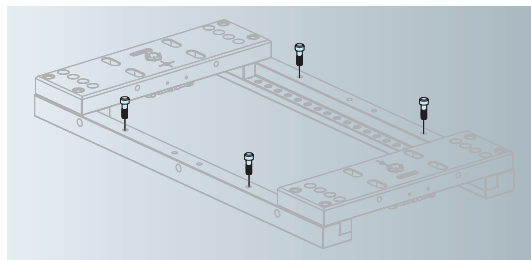
Version Gripper coupling for RCS gripper, consisting of 4 positioning pins and a chucking spigot.  
 Application On all EROWA handling devices equipped with the RCS coupling system.  
 Assembly Glue in pins according to instructions, fit chucking spigot with bolt.  
 Note Recess for EWIS chip (not included) in the chucking spigot.



# EROWA Wire EDM Tooling Accessories

## ER-034533 FrameSet gripper bolts 4 pieces

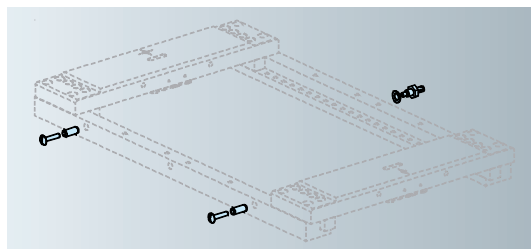
Version Set of 4 gripper bolts.  
 Application For FrameSet clamping frames with EROWA handling facilities.  
 Note Can only be used in connection with FrameSet gripper automation.



## ER-022465 Coupling kit FrameSet manual

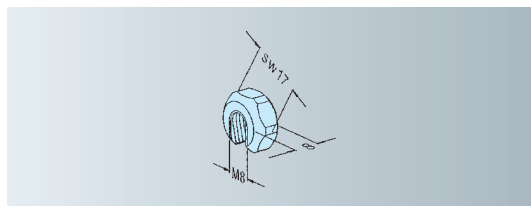


Version Set including 2 gripper pins 2 M6x30 bolts, 1 cord holder, 1 spring washer  
 Application To take up FrameSet frames with the EROWA Lift.



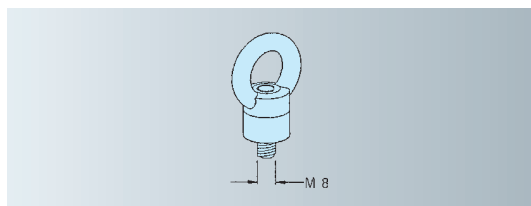
## ER-008846 Slotted nut M8 10 pieces

Quantity 10  
 Application On long setscrews, to avoid time-consuming nut tightening.



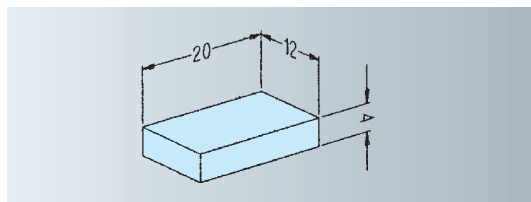
## ER-008848 Eye bolt M8 1 couple

Quantity 2  
 Application To raise loaded clamping frames with a crane or lifting device.



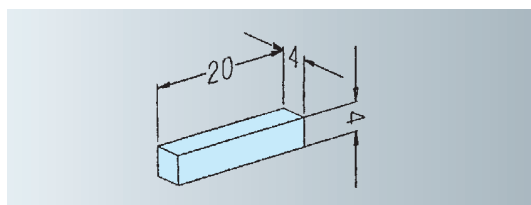
## ER-007799 Spacer plate large 50 pieces

Quantity 50  
 Application As supports for chucking claws.



## ER-007781 Spacer plate small 50 pieces

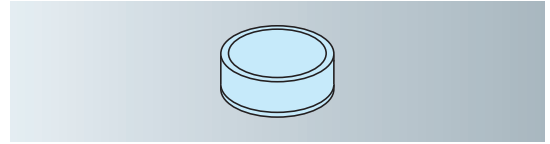
Quantity 50  
 Application As supports for chucking claws.



**ER-001674 Erogrease (corrosion protection)**  
**1 kg**



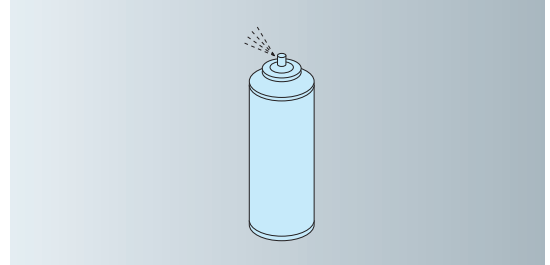
Version 1kg tin.  
Application For the durable lubrication of guides, joints and threads submerged in water.



**ER-010734 Branotect maintenance spray**  
**0.4 liter**

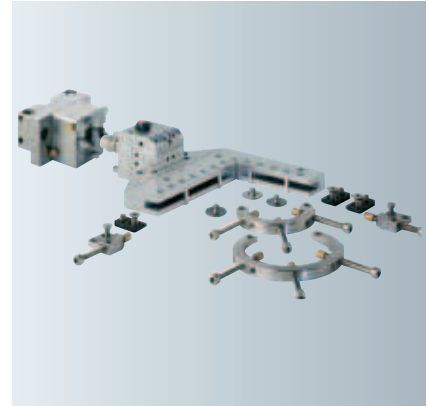


Version 0.4 litre aerosol.  
Application For the maintenance and conservation of all the clamping elements used for WEDM purposes.

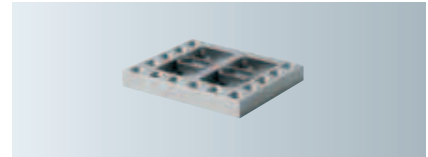


## EROWA Wire EDM Tooling Kit

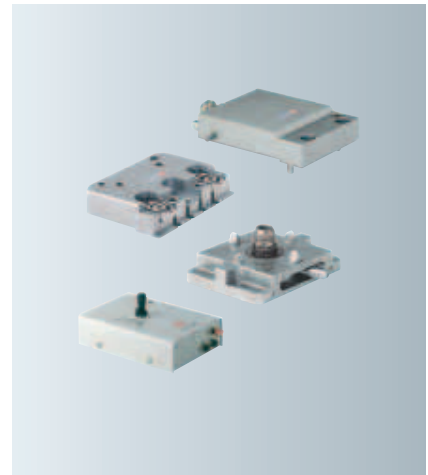
ER-009696	UnoSet Basic Kit manual
ER-007962	UnoSet Basic Kit pneumatic
Version	Basic tooling system equipment for WEDM centers.
Application	Suitable for the palletization of small and medium sized workpieces.
Mounting	Depending on the machine base, we recommend the multi-adapter plate ER-017198.
Kit contains	1 chuck 1 UniVise universal vise
Note	Machine-specific information can be found at <a href="http://www.erowa.com/unoset">www.erowa.com/unoset</a> or at your EROWA dealer.



ER-017198	Multi-adapter plate
Application	To fit the UnoSet chuck to the machine base
Mounting	Through the adjustable borehole grids with the bolts supplied.



ER-021502	Starter Kit PalletSet W, manual
ER-021503	Starter Kit PalletSet W pneumatic
Version	Basic tooling system equipment for WEDM centers.
Application	Suitable for the palletization of medium-sized workpieces.
Mounting	Directly to the machine base with the fittings supplied.
Kit contains	1 chuck 1 fixholder 1 vise 1 manual control unit (pneumatic)
Note	Machine-specific information can be found at <a href="http://www.erowa.com/palletset">www.erowa.com/palletset</a> or at your EROWA dealer.



	<b>Starter Kit FrameSet, fix</b> <b>Starter Kit FrameSet, basic</b> <b>Starter Kit Frameset, manual</b> <b>Starter Kit Frameset, pneumatic</b>
Version	Basic frame tooling system equipment for WEDM centers. Manually or pneumatically controlled chucks according to your choice. With the FrameSet fix version, the clamping frames are firmly bolted to the machine base.
Application	Suitable for the palletization of small and medium-sized workpieces.
Mounting	directly to the machine base with the fittings supplied.
Kit contains	2 FrameSet fix plates or corresponding chucks 1 clamping frame of the machine-specific size 2 fitting clamping beams 1 set clamping equipment 1 set frame supports Fittings and pneumatic materials where necessary
Note	Machine-specific information can be found at <a href="http://www.erowa.com/frameset">www.erowa.com/frameset</a> or at your EROWA dealer.



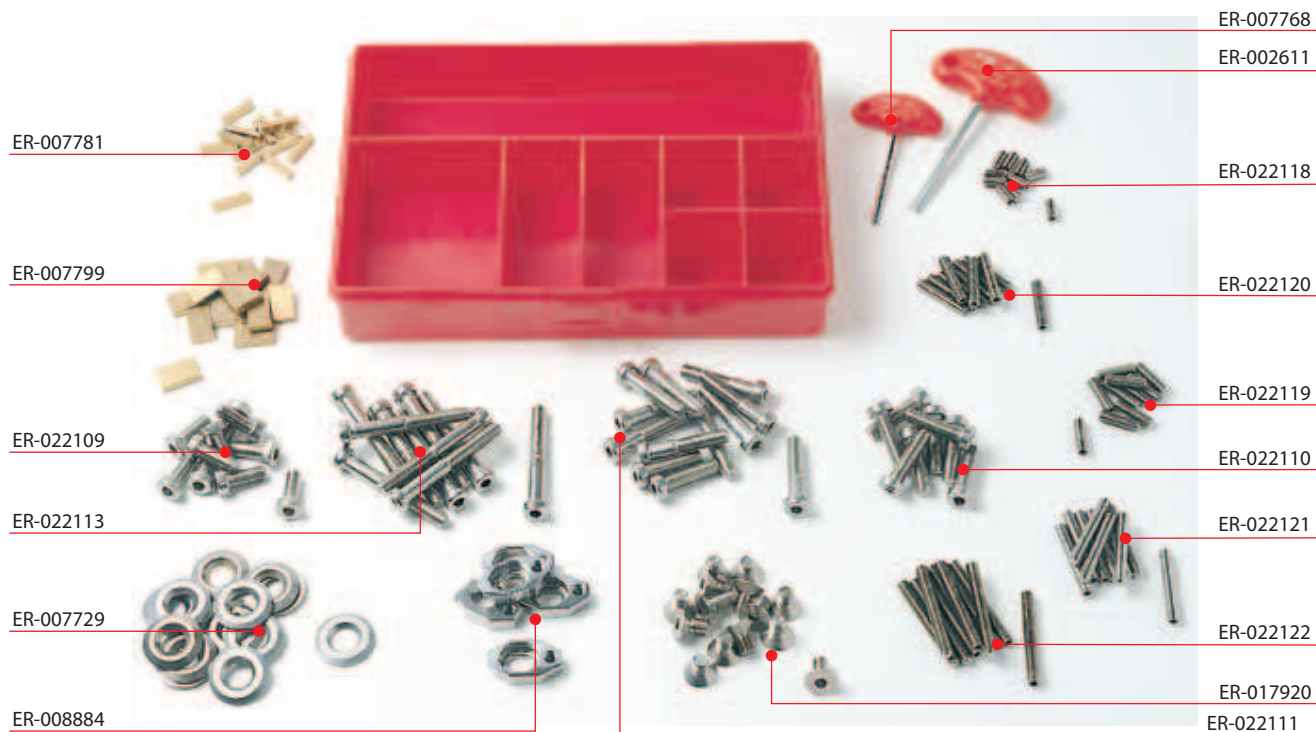
	<b>ManoSet Kit XXL</b>
Version	Basic frame tooling system equipment for WEDM centers. Fixed rails serve as the basis for the clamping beams.
Application	On large WEDM centers.
Mounting	Directly to the machine base with the fittings supplied.
Kit contains	1 set machine-specific base rails 2 fitting clamping beams 1 set clamping equipment
Note	Machine-specific information can be found at <a href="http://www.erowa.com/manoset">www.erowa.com/manoset</a> or at your EROWA dealer.



## EROWA Wire EDM Tooling

# Set of clamping elements

EROWA's extensive accessory sets contain a number of practical and economically priced auxiliaries which turn clamping jobs into fun.



### ER-019989 Set of clamping elements, PalletSet W

These materials have been packed in one solid plastic box.

Order number	Description	Units per set	Units supplied by order number
ER-002611	Hex key SW 5	1	1
ER-007729	Z-washer 3 mm	10	1
ER-007768	Hex key SW 3	1	1
ER-007781	Spacer, small	50	50
ER-007799	Spacer, large	50	50
ER-008884	Clip, universal	10	4
ER-017920	Countersunk bolt M8 x 14	10	1
ER-022109	Socket head bolt M8 x 20	10	50
ER-022110	Socket head bolt M8 x 30	10	50
ER-022111	Socket head bolt M8 x 40	10	50
ER-022113	Socket head bolt M8 x 60	10	50
ER-022118	Threaded pin M6 x 12	10	50
ER-022119	Threaded pin M6 x 20	10	50
ER-022120	Threaded pin M6 x 30	10	50
ER-022121	Threaded pin M6 x 40	10	50
ER-022122	Threaded pin M6 x 50	10	50

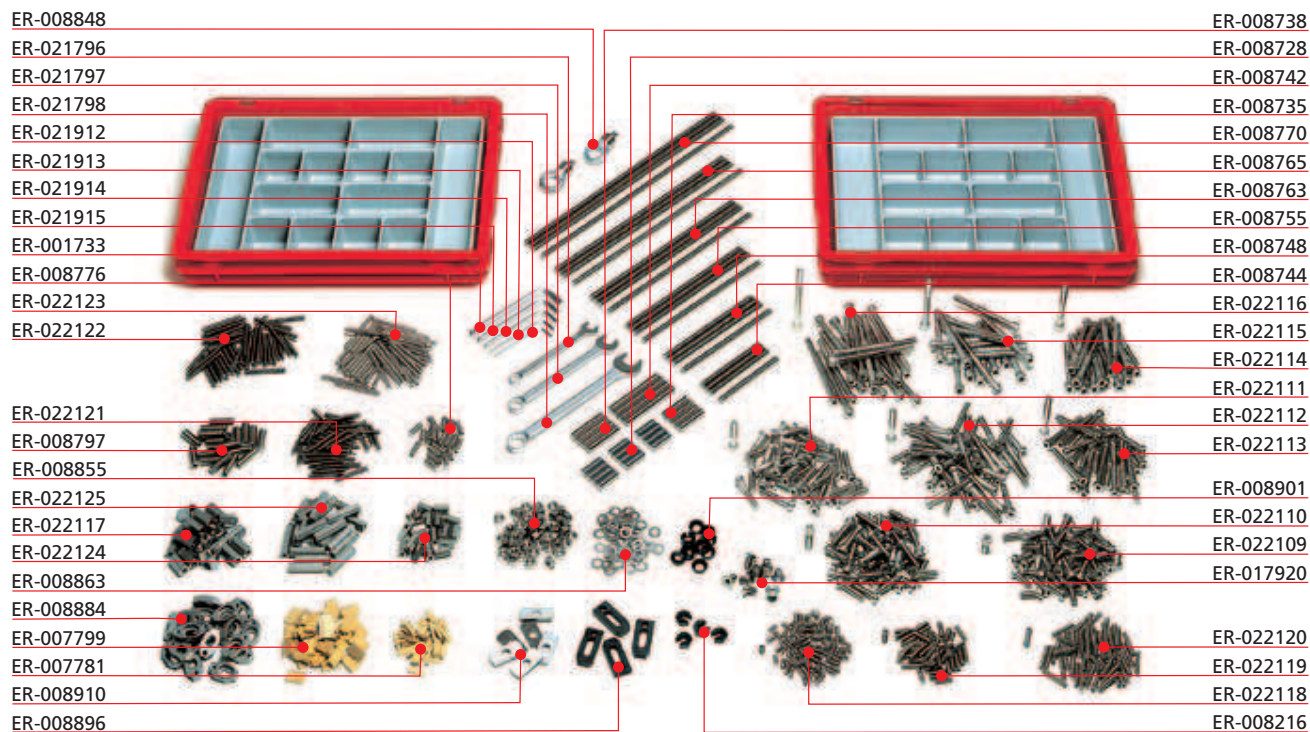




## EROWA Wire EDM Tooling

# Set of clamping elements for Wire EDM Tooling Standard

EROWA's extensive accessory sets contain a number of practical and economically priced auxiliaries which turn clamping jobs into fun.



### ER-008868 Set of clamping elements, standard

These materials have been packed in one solid plastic box.

Order number	Description	Units per set	Units supplied by order number
ER-001733	Hex key SW 8	1	1
ER-007781	Spacer plate, small	50	50
ER-007799	Spacer plate, large	50	50
ER-008216	Slotted nut M8	4	4
ER-008728	Straight pin $\varnothing 9$ L = 30	12	4
ER-008735	Straight pin $\varnothing 9$ L = 40	4	4
ER-008738	Straight pin $\varnothing 9$ L = 50	4	4
ER-008742	Straight pin $\varnothing 9$ L = 80	4	4
ER-008744	Threaded rod M8 x 100	4	4
ER-008748	Threaded rod M8 x 150	4	4
ER-008755	Threaded rod M8 x 200	4	4
ER-008763	Threaded rod M8 x 250	4	4
ER-008765	Threaded rod M8 x 300	4	4
ER-008770	Threaded rod M8 x 350	4	4
ER-008776	Threaded pin, hex, M8 x 20	20	50

## ER-008868 Set of clamping elements, standard

These materials have been packed in one solid plastic box.

Order number	Description	Units per set	Units supplied by order number
ER-008797	Threaded pin, hex, M10 x 30	20	50
ER-008848	Eye bolt	2	2
ER-008855	Hex nut, M8 x 0.8	50	50
ER-008863	Washer	50	50
ER-008884	Bracket, universal	20	4
ER-008896	Bracket	4	4
ER-008901	Sliding disk	10	20
ER-008910	Spacer plate	8	8
ER-017920	Countersunk head bolt M8 x 14	10	1
ER-021796	Ring spanner, SW 10	1	1
ER-021797	Ring spanner, SW 13	1	1
ER-021798	Ring spanner, SW 17	1	1
ER-021912	Hex key SW 3	1	1
ER-021913	Hex key SW 4	1	1
ER-021914	Hex key SW 5	1	1
ER-021915	Hex key SW 6	1	1
ER-022109	Socket head bolt, hex, M8 x 20	50	50
ER-022110	Socket head bolt, hex, M8 x 30	50	50
ER-022111	Socket head bolt, hex, M8 x 40	40	50
ER-022112	Socket head bolt, hex, M8 x 50	40	50
ER-022113	Socket head bolt, hex, M8 x 60	20	50
ER-022114	Socket head bolt, hex, M8 x 70	20	20
ER-022115	Socket head bolt, hex, M8 x 80	20	20
ER-022116	Socket head bolt, hex, M8 x 100	20	20
ER-022117	Hex extension nut M8	20	20
ER-022118	Threaded pin, hex, M6 x 12	100	50
ER-022119	Threaded pin, hex, M6 x 20	50	50
ER-022120	Threaded pin, hex, M6 x 30	50	50
ER-022121	Threaded pin, hex, M6 x 40	50	50
ER-022122	Threaded pin, hex, M6 x 50	50	50
ER-022123	Threaded pin, hex, M6 x 60	50	50
ER-022124	Extension nut, hex / M6	20	20
ER-022125	Spacer, hex / M6 / L = 40	20	20

# EROWA Wire EDM Tooling

## set of clamping elements for Wire EDM Tooling Economy

EROWA's extensive accessory sets contain a number of practical and economically priced auxiliaries which turn clamping jobs into fun.



### ER-008215 Set of clamping elements Economy

These materials have been packed in one solid plastic box.

Order number	Description	Units per set	Units supplied by order number
ER-001733	Hex key SW 8	1	1
ER-007781	Spacer plate, small	50	50
ER-007799	Spacer plate, large	50	50
ER-008216	Slotted nut M8	4	4
ER-008728	Straight pin, $\varnothing 9$ L = 30	12	4
ER-008735	Straight pin, $\varnothing 9$ L = 40	4	4
ER-008738	Straight pin, $\varnothing 9$ L = 50	4	4
ER-008742	Straight pin, $\varnothing 9$ L = 80	4	4
ER-008744	Threaded rod M8 x 100	4	4
ER-008748	Threaded rod M8 x 150	4	4
ER-008755	Threaded rod M8 x 200	4	4
ER-008763	Threaded rod M8 x 250	4	4
ER-008765	Threaded rod M8 x 300	4	4
ER-008770	Threaded rod M8 x 350	4	4
ER-008776	Threaded pin, hex, M8 x 20	10	50

## ER-008215 Set of clamping elements Economy

These materials have been packed in one solid plastic box.

Order number	Description	Units per set	Units supplied by order number
ER-008797	Threaded pin, hex, M10 x 30	10	50
ER-008848	Eye bolt	2	2
ER-008855	Hex nut, M8 x 0.8	50	50
ER-008863	Washer	50	50
ER-008884	Bracket universal	15	4
ER-008896	Bracket	4	4
ER-008901	Sliding disk	10	20
ER-008910	Spacer plate	8	8
ER-017920	Countersunk head bolt M8 x 14	10	1
ER-021796	Ring spanner, SW 10	1	1
ER-021797	Ring spanner, SW 13	1	1
ER-021798	Ring spanner, SW 17	1	1
ER-021912	Hex key SW 3	1	1
ER-021913	Hex key SW 4	1	1
ER-021914	Hex key SW 5	1	1
ER-021915	Hex key SW 6	1	1
ER-022109	Socket head bolt, hex, M8 x 20	20	50
ER-022110	Socket head bolt, hex, M8 x 30	10	50
ER-022111	Socket head bolt, hex, M8 x 40	10	50
ER-022112	Socket head bolt, hex, M8 x 50	10	50
ER-022113	Socket head bolt, hex, M8 x 60	10	50
ER-022114	Socket head bolt, hex, M8 x 70	10	20
ER-022115	Socket head bolt, hex, M8 x 80	10	20
ER-022116	Socket head bolt, hex, M8 x 100	10	20
ER-022117	Hex extension nut, M8	10	20
ER-022118	Threaded pin, hex, M6 x 12	20	50
ER-022119	Threaded pin, hex, M6 x 20	10	50
ER-022120	Threaded pin, hex, M6 x 30	10	50
ER-022121	Threaded pin, hex, M6 x 40	10	50
ER-022122	Threaded pin, hex, M6 x 50	10	50
ER-022123	Threaded pin, hex, M6 x 60	10	50
ER-022124	Extension nut, hex / M6	10	20
ER-022125	Spacer, hex/M6/L = 40	10	20

## EROWA Wire EDM Tooling

# Set of clamping elements for Wire EDM Tooling XL

EROWA's extensive accessory sets contain a number of practical and economically priced auxiliaries which turn clamping jobs into fun.



### ER-008301 Set of clamping elements, XL

These materials have been packed in one solid plastic box.

Order number	Description	Units per set	Units supplied by order number
ER-001417	Wrench SW13	1	1
ER-002613	Hex key SW 5	1	1
ER-007781	Spacer plate, small, 4 x 4 x 20 mm	50	50
ER-007799	Spacer plate, large, 4 x 12 x 20 mm	50	50
ER-008744	Threaded rod M8 x 100	4	4
ER-008748	Threaded rod M8 x 150	4	4
ER-008755	Threaded rod M8 x 200	4	4
ER-008763	Threaded rod M8 x 250	4	4
ER-008765	Threaded rod M8 x 300	4	4
ER-008770	Threaded rod M8 x 350	4	4
ER-008776	Threaded rod M8 x 20	10	50
ER-008786	Threaded rod M8 x 30	10	50
ER-008790	Threaded rod M8 x 40	10	50
ER-008794	Threaded rod M8 x 50	10	50
ER-008812	Countersunk head bolt M8 x 40	20	40
ER-008855	Hex nut M8 x 0.8D	20	50
ER-008861	Hex nut M8 x 3D	4	10
ER-008863	Washer $\varnothing$ 15 x 8,4 x 1.6	20	50
ER-008896	Clamp 45 mm	8	4

## ER-008301 Set of clamping elements XL

These materials have been packed in one solid plastic box.

Order number	Description	Units per set	Units supplied by order number
ER-008901	Sliding disk	20	20
ER-010115	Clamps, aluminum, bronzed	4	1
ER-010120	Column, 100 mm	4	1
ER-010123	Column, 60 mm	4	1
ER-010126	Adjustment supports	4	1

EROWA Wire EDM Tooling

# Set of clamping elements for Wire EDM Tooling

EROWA's extensive accessory sets contain a number of practical and economically priced auxiliaries which turn clamping jobs into fun.

ER-008868 Set of clamping elements, standard



ER-019989 Set of clamping elements PalletSet W



ER-008215 Set of clamping elements Economy



ER-008301 Set of clamping elements XL





